

STATE OF OKLAHOMA  
DEPARTMENT OF HIGHWAYS  
SURVEY DIVISION

Survey Division  
Form No. 16  
Rev. Dec. 2, 1974

FLOOD INFORMATION FORM

To be used in obtaining and transmitting flood water elevations for Survey Division office record files. This information to be obtained by all Chiefs of Party or others in their vicinity in times of unusual high water, or at any time available from a reliable source. The elevations can be recorded by level reading, by measurement from bridge floor, in relation to a house, above roadbed or any other dependable, clear manner that fits the situation, the highest order possible to be used. Separate report to be made on each crossing or place obtained.

County JACKSON Date highwater occurred OCTOBER 2, 1986

Highway number U.S. 62 Name of stream NORTH FORK OF RED RIVER

Direction and distance from nearest town, village or store APPROX. 14 MILES EAST OF ALTUS AT NORTHFORK OF RED RIVER.

Section, Township and Range SECTION 21, T-2-N, R-18-W.

Description of Location 1.5' BELOW BRIDGE SEAT ON WEST END OF BRIDGE.

Elevation 1320.5 Source of levels F.A.P. NO. F-216(15) U.S. 62 PLANS

Method obtained HAND LEVEL Date obtained OCTOBER 6, 1986

Did it appear to be  normal  medium  extreme  do not know

Was highwater mark obtained from actual water, drift, local resident, U. S. Engineers, etc.? DRIFT.

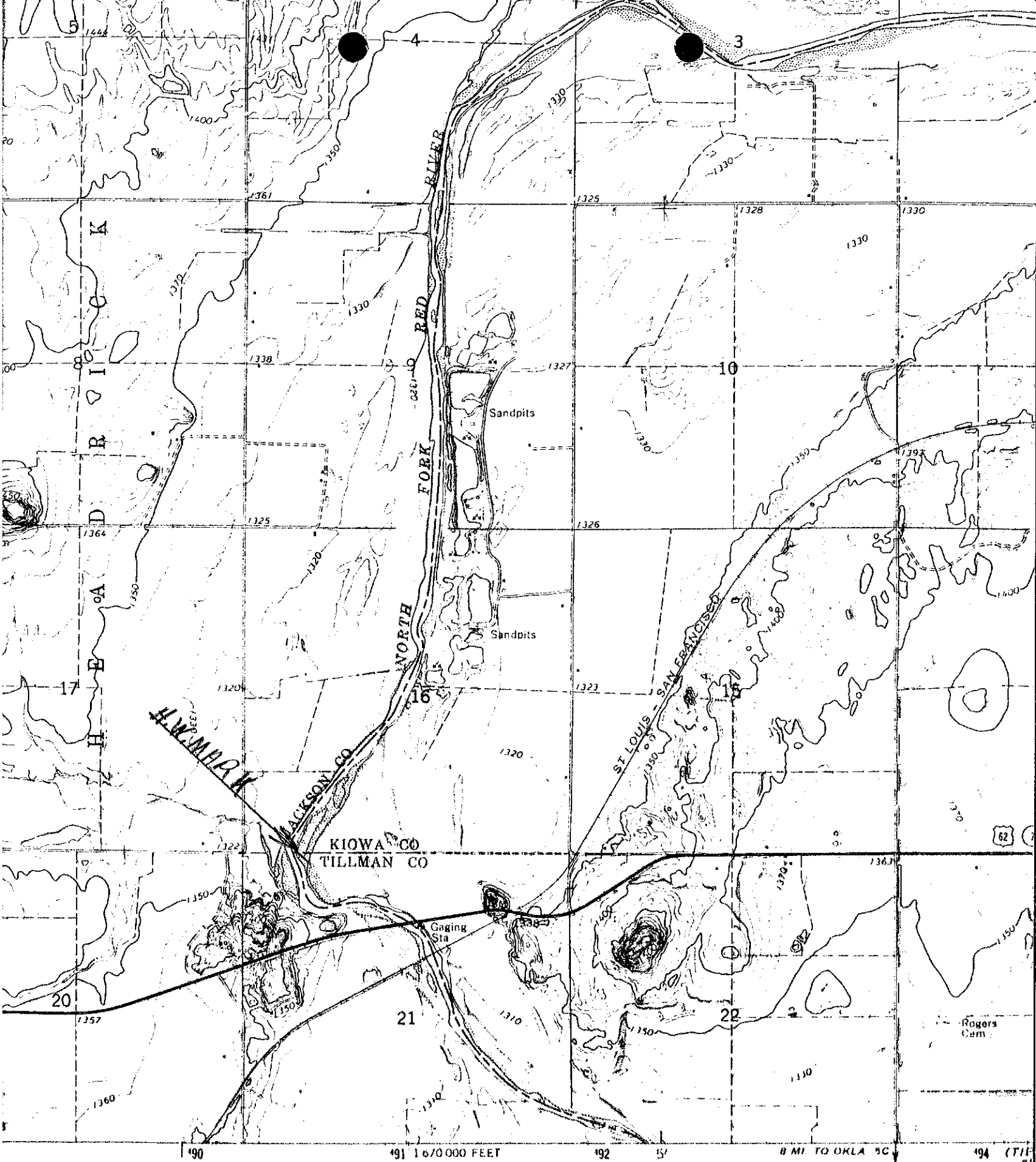
Explanatory Remarks THIS EXTREME HIGHWATER OCCURRED FROM 10" RAINS OVER A THREE DAY PERIOD.

Location to be shown on back of this sheet as a check.

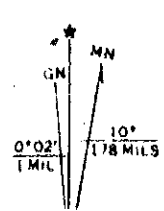
Field Note: To be sent to  
Survey Engineer

Bruce A. Leffingwell  
TRANS. SPECIALIST II  
OCTOBER 8, 1986  
Date

LOCATION No 2



and published by the Geological Survey  
 JSC&GS, and Oklahoma Geological Survey  
 Photogrammetric methods from aerial  
 1960. Field checked 1964  
 1. 1927 North American datum  
 used on Oklahoma coordinate system, south zone  
 of the Transverse Mercator grid ticks,  
 blue



SCALE  
 1 2 3 4 5 6 7 8 9 10  
 1000 0 1000 2000  
 CONTOUR IN  
 DATUM IS