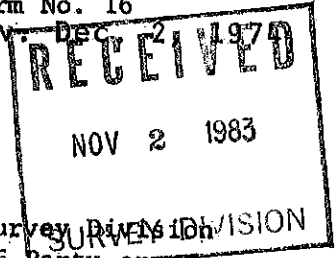


STATE OF OKLAHOMA  
DEPARTMENT OF HIGHWAYS  
SURVEY DIVISION

Survey Division  
Form No. 16  
Rev. Dec 2 1970



FLOOD INFORMATION FORM

To be used in obtaining and transmitting flood water elevations for Survey Division office record files. This information to be obtained by all Chiefs of Party or others in their vicinity in times of unusual high water, or at any time available from a reliable source. The elevations can be recorded by level reading, by measurement from bridge floor, in relation to a house, above roadbed or any other dependable, clear manner that fits the situation, the highest order possible to be used. Separate report to be made on each crossing or place obtained.

County JACKSON Date highwater occurred OCTOBER 20, 1983

Highway number S.H. 5 Name of stream DRAIN

Direction and distance from nearest town, village or store 0.4 MILES WEST OF  
ELDORADO, OKLAHOMA ON S.H. 5

Section, Township and Range BETWEEN SECTIONS 12 & 13, T-1-S, R-24-W

Description of Location AT 2 - 10'X5'X27' RDY. R.C.B. AT STA. 103+10.3 ON

F.A.S.P. PROJ. NO. F.A.S. 71-A(1) - S.H. 5 PLANS

F.A.S.P. PROJ. NO. F.A.S. 71-A(1) -

Elevation 1430.8 Source of levels S.H. 5 PLANS

Method obtained HAND LEVEL Date obtained OCTOBER 31, 1983

Did it appear to be  normal  medium  extreme  do not know

Was highwater mark obtained from actual water, drift, local resident, U. S. Engineers, etc.? DRIFT

Explanatory Remarks EXTREME HIGHWATER ROSE TO TOP OPENING OF STRUCTURE BECAUSE OF 10"  
RAINS OVER A 3 DAY PERIOD. PREVIOUS H.W. MARK ELEV. 1430.0  
(FROM PLANS)

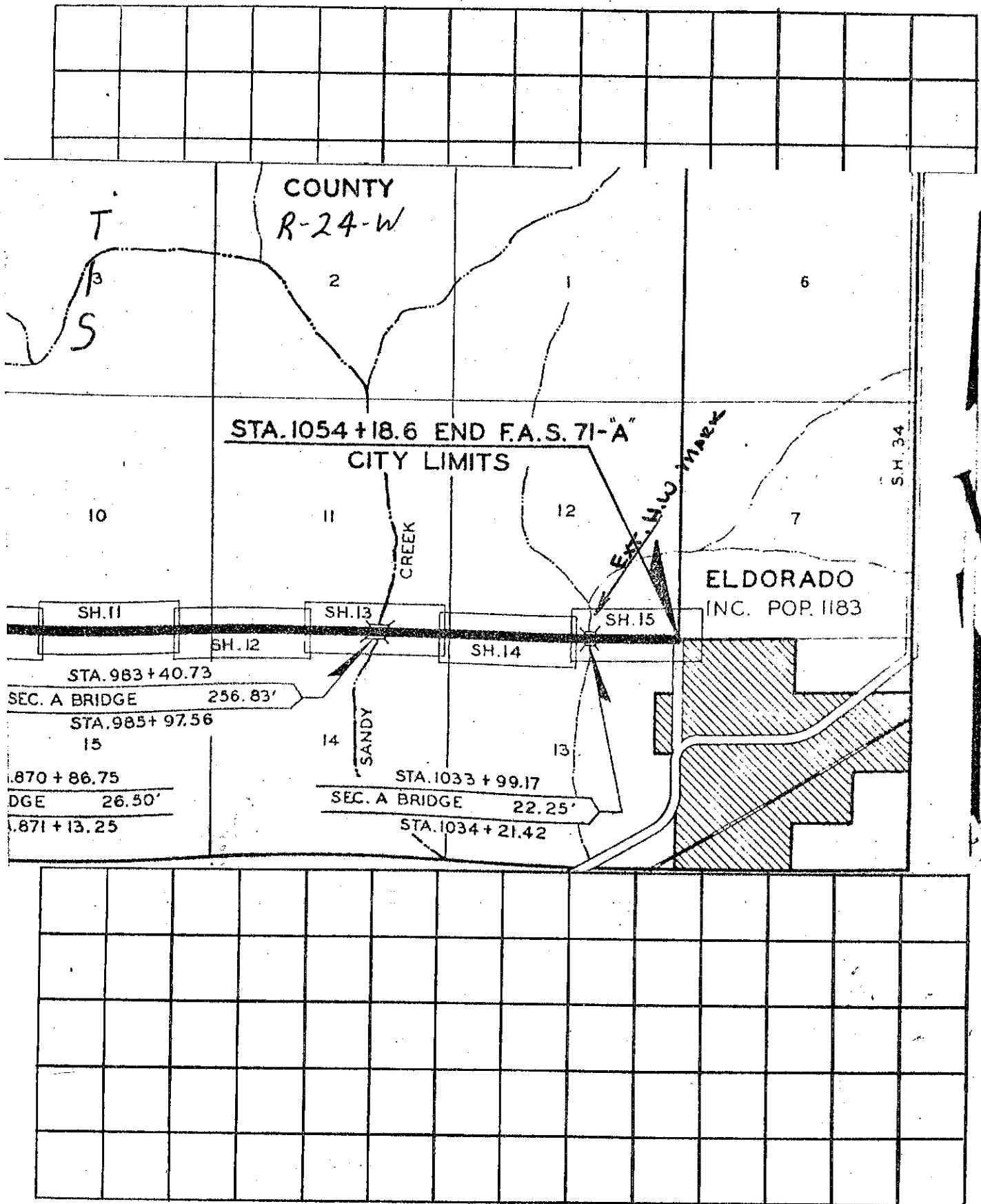
Location to be shown on back of this sheet as a check.

Field Note: To be sent to  
Survey Engineer

Dwayne Walden  
Location Engineer

OCTOBER 31, 1983

Date



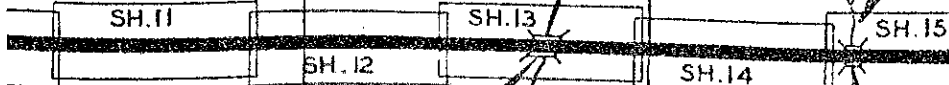
COUNTY  
R-24-W

T

S

STA. 1054 + 18.6 END F.A.S. 71-A  
CITY LIMITS

ELDORADO  
INC. POP. 1183



STA. 983 + 40.73  
SEC. A BRIDGE 256.83'  
STA. 985 + 97.56  
15  
STA. 870 + 86.75  
DGE 26.50'  
STA. 871 + 13.25

STA. 1033 + 99.17  
SEC. A BRIDGE 22.25'  
STA. 1034 + 21.42

EX. H.W. MARK

SH. 34

