

Plans & Survey Dept.
Form No. 16
Rev. July 10, 1947

STATE OF OKLAHOMA
DEPARTMENT OF HIGHWAYS
PLANS AND SURVEY DEPARTMENT

FLOOD INFORMATION FORM

To be used in obtaining and transmitting flood water elevations for Plans & Survey office record files. This information to be obtained by all Chiefs of Party in their vicinity in times of unusual high water, or at any time available from a reliable source. The elevations can be recorded by level reading, by measurement from bridge floor, in relation to a house, above roadbed or any other dependable, clear manner that fits the situation, the highest order possible to be used. Separate report to be made on each crossing or place obtained.

County GRANT COUNTY Date highwater occurred NOVEMBER 18, 1964

Highway number US 81-F* 24(9) Name of stream Salt Fork of Arkansas River

Direction and distance from nearest town, village or store 2.0 miles North

Pond Creek Oklahoma At Salt Fork of Arkansas River.

Section, Township and Range SECT. 35, T-26-N, R-6-W

Description of Location At. Salt Fork of Arkansas River bridge located on US 81 FAP-F-24(9) Grant County.

Method obtained Y* Level

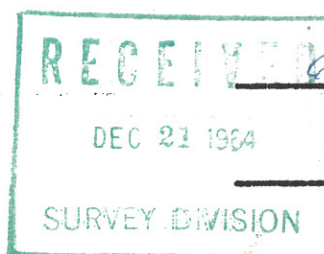
Elevation 1034.7 Source of levels USC & GS

Was highwater mark obtained from actual water, drift, local resident, U. S. Engineers, etc? Drift and water marks at each end of present river bridge on North and South bank of river.

Explanatory Remarks USC & GS level datum used. Run set of levels from USC & GS BM # R-181- located at CRI & P RR and East & West sec. line approx 1.0 mile North of Pond Creek. Setting BM(X) on NE cor. of SE wingwall of river bridge. Sta. 1143/78.58 of FAP-F-24(9) plans. Elev- 1049.12) (BM (X) on NW cor. of NW wingwall of river bridge Sta. 1149/81.41 of FAP-F-24(9) plans. Elev.- 1048.79 Ft

Location to be shown on back of this sheet as a check.

Field Note: To be sent to Engr.
of Plans & Survey (1 copy).
Office Note: To be filed in Flood
Information by Counties.



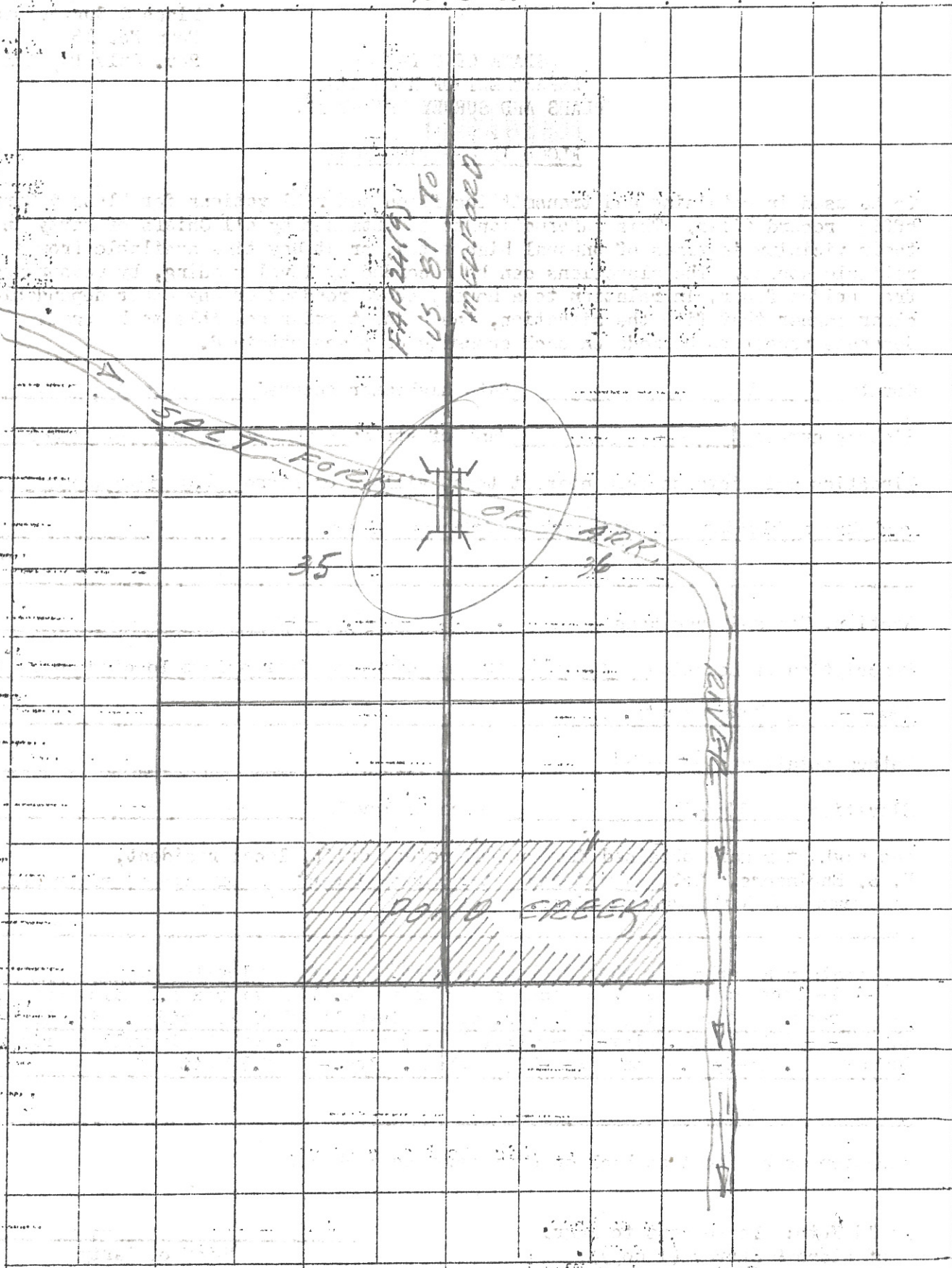
Chief of Party

Dec. 15, 1964

Date

LOCATION NO. 2

R-6-W



FAP 24(4)
US 81 TO
MEDICAL

SALT FORK



APR 19

35

DODD CREEK

RIVER

TOWN