

Plans & Survey Dept.
Form No. 16
Rev. July 10, 1947

STATE OF OKLAHOMA
DEPARTMENT OF HIGHWAYS
PLANS AND SURVEY DEPARTMENT

FLOOD INFORMATION FORM

To be used in obtaining and transmitting flood water elevations for Plans & Survey office record files. This information to be obtained by all Chiefs of Party in their vicinity in times of unusual high water, or at any time available from a reliable source. The elevations can be recorded by level reading, by measurement from bridge floor, in relation to a house, above roadbed or any other dependable, clear manner that fits the situation, the highest order possible to be used. Separate report to be made on each crossing or place obtained.

County GRANT COUNTY Date highwater occurred NOVEMBER 18, 1964

Highway number US 60 FAP-NRH 283(C) Name of stream SALT FORK OF ARKANSAS RIVER

Direction and distance from nearest town, village or store EAST CITY LIMITS
OF POND CREEK OKLAHOMA.

Section, Township and Range SECTION 1- T*25-N, R-6-W GRANT COUNTY

Description of Location At Salt Fork of Arkansas River Bridge at East City
of Pond Creek Oklahoma.

Method obtained Y-Level

Elevation 1030.3 Source of levels FAP-N.H.R. 283(C) Established by
West and East bank of River (using elev. of piers, bridge floor at each end of Br.)
Was highwater mark obtained from actual water, drift, local resident,
U. S. Engineers, etc? From Drift and water marks on bank of river.

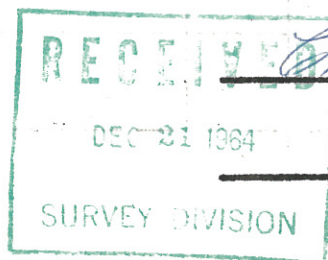
Explanatory Remarks Highwater elevations shown were established by using elev. as
(283*0)
shown on FAP-N.R.H. as built Plans. for top of piers, beginning and end of bridge

Highwater was 12.17 below bridge floor (Each end of Bridge)

BM(Square) on SE Cor of SW Wingwall of bridge EL-1043.10

Location to be shown on back of this sheet as a check.

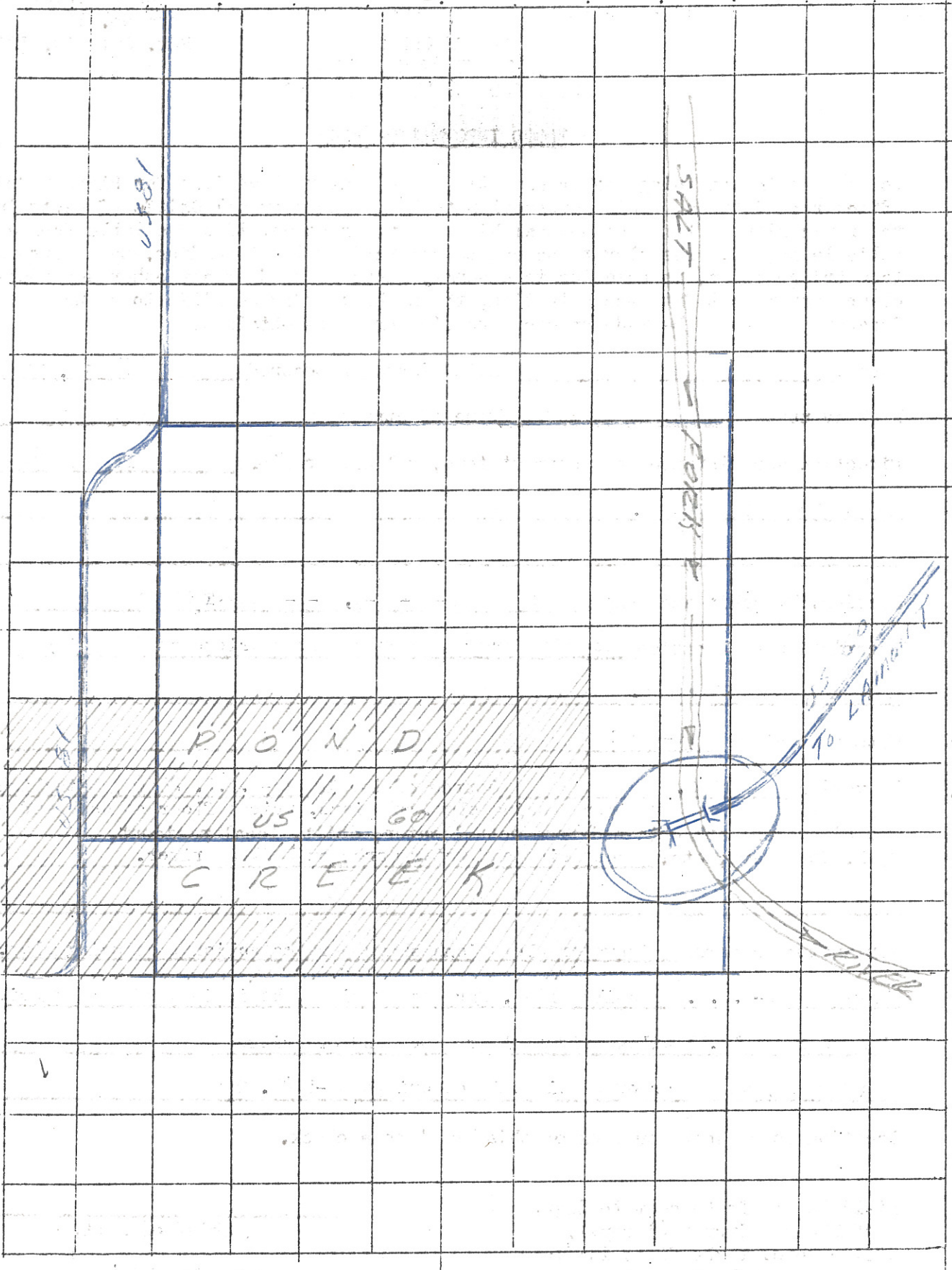
Field Note: To be sent to Engr.
of Plans & Survey (1 copy).
Office Note: To be filed in Flood
Information by Counties.



Chief of Party
Dec. 15, 1964
Date

LOCATION NO. 5

R-6-W



T 25 N

