

STATE OF OKLAHOMA  
DEPARTMENT OF HIGHWAYS  
PLANS AND SURVEY DEPARTMENT

FLOOD INFORMATION FORM

To be used in obtaining and transmitting flood water elevations for Plans & Survey office record files. This information to be obtained by all Chiefs of Party in their vicinity in times of unusual high water, or at any time available from a reliable source. The elevations can be recorded by level reading, by measurement from bridge floor, in relation to a house, above roadbed or any other dependable, clear manner that fits the situation, the highest order possible to be used. Separate report to be made on each crossing or place obtained.

County GRANT COUNTY Date highwater occurred November 18, 1964

Highway number SH -74 Name of stream None

Direction and distance from nearest town, village or store 0.6 mile South of Lamont Oklahoma on SH-74

Section, Township and Range SECTION -6- T-25-N. R-3-W GRANT County

Description of Location At first drain South of Lamont on SH 74 approx. 0.6 miles South of Lamont Oklahoma

Method obtained Y-Level

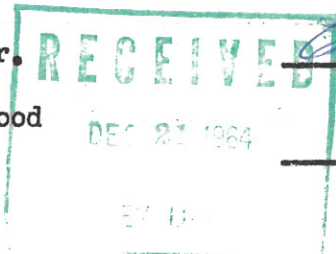
Elevation None Source of levels None

Was highwater mark obtained from actual water, drift, local resident, U. S. Engineers, etc? Water mark of Actual Highwater as marked by me. 11.18.64  
~~and water mark on center line of present SH 74~~  
at location ( Overflow water from Pond Creek, and back water from Salt Fork River)  
And water marks on highway.

Explanatory Remarks Highwater was over SH-74 from East and West section line between sections 6-31, T-25 & 26-N, R-3-W, for approx 2000feet. South.

Location to be shown on back of this sheet as a check.

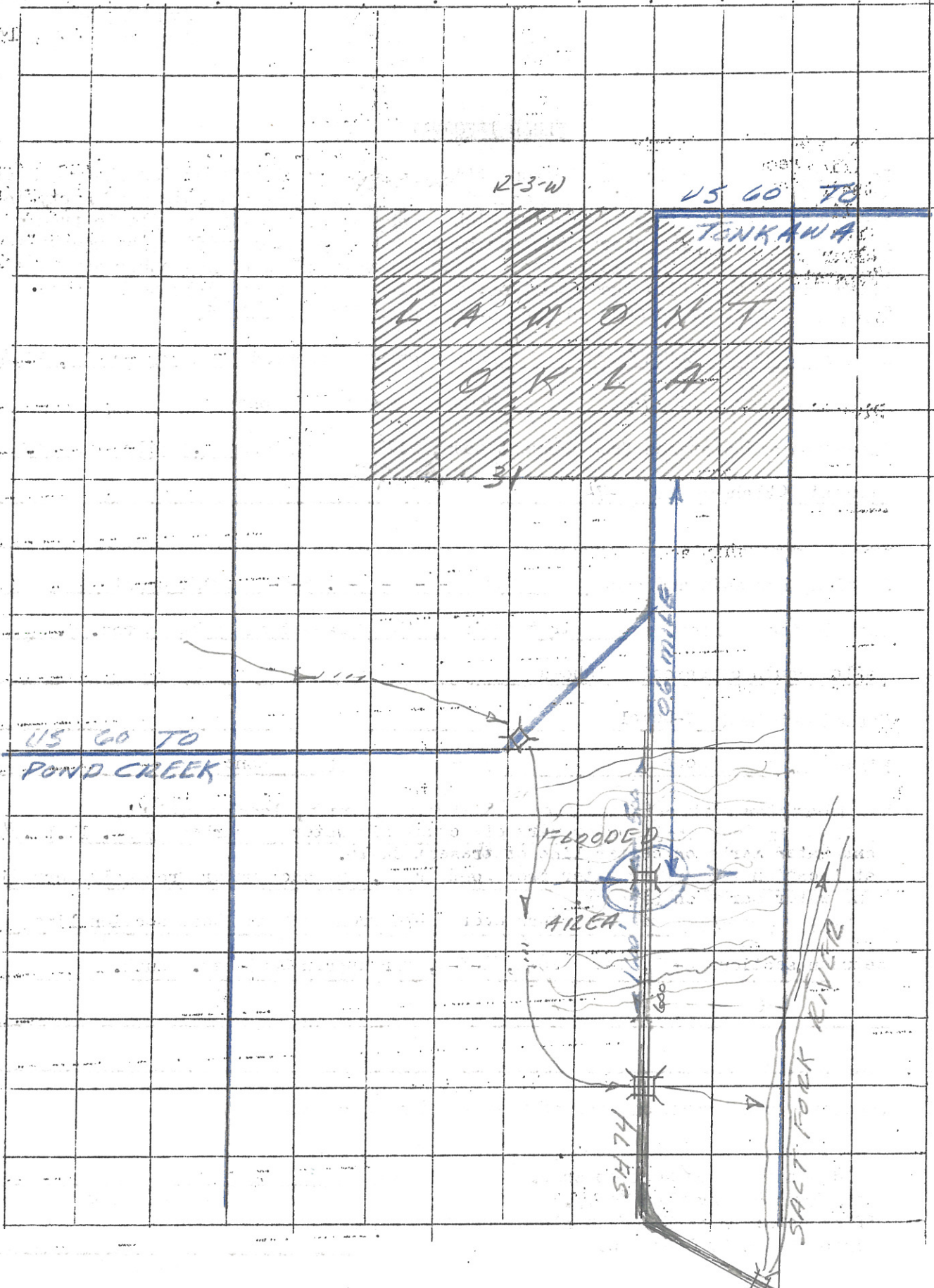
Field Note: To be sent to Engr. of Plans & Survey (1 copy).  
Office Note: To be filed in Flood Information by Counties.



Chas L. Hillis  
Chief of Party  
12/15/64  
Date

LOCATION NO. 6

MAP



T26N

