

STATE OF OKLAHOMA
DEPARTMENT OF HIGHWAYS
SURVEY DIVISION

Survey Division
Form No. 16
Rev. Sept. 10, 1961

FLOOD INFORMATION FORM

To be used in obtaining and transmitting flood water elevations for Survey Division office record files. This information to be obtained by all Chiefs of Party or others in their vicinity in times of unusual high water, or at any time available from a reliable source. The elevations can be recorded by level reading, by measurement from bridge floor, in relation to a house, above roadbed or any other dependable, clear manner that fits the situation, the highest order possible to be used. Separate report to be made on each crossing or place obtained.

County Grady Date highwater occurred 9/17/65

Highway number ^{US}S.H. 62 Name of stream Washita River

Direction and distance from nearest town, village or store 2 miles east of Chickasha
^{US}on ~~S.H.~~ 62.

Section, Township and Range Section 26, T7N, R7W

Description of Location Bridge over Washita River on ^{US}~~S.H.~~ 62, 2 miles east of Chickasha.

Elevation 1069.3 Source of levels USC&GS SAP-26(4) plans

Method obtained with wye level & Philadelphia rod Date obtained 9/29/65

Did it appear to be normal medium extreme do not know

Was highwater mark obtained from actual water, drift, local resident, U. S. Engineers, etc.? Taken from silt mark on temporary bridge

Explanatory Remarks Information was obtained by A. W. Ziegelgruber and B. D. Roden.

Highwater was caused from an approx. rain of 10 to 12 inches upstream over a period of about 12 hours.

Location to be shown on back of this sheet as a check.

Field Note: To be sent to
Survey Engineer

A. W. Ziegelgruber
~~XXXXXXXXXXXXXXXXXXXX~~ Chief of Party
~~XXXXXXXXXXXXXXXXXXXX~~
December 20, 1965
Date

M
SURVEY DIVISION

R 8 W

R 7 W

R 6 W

T 8 N

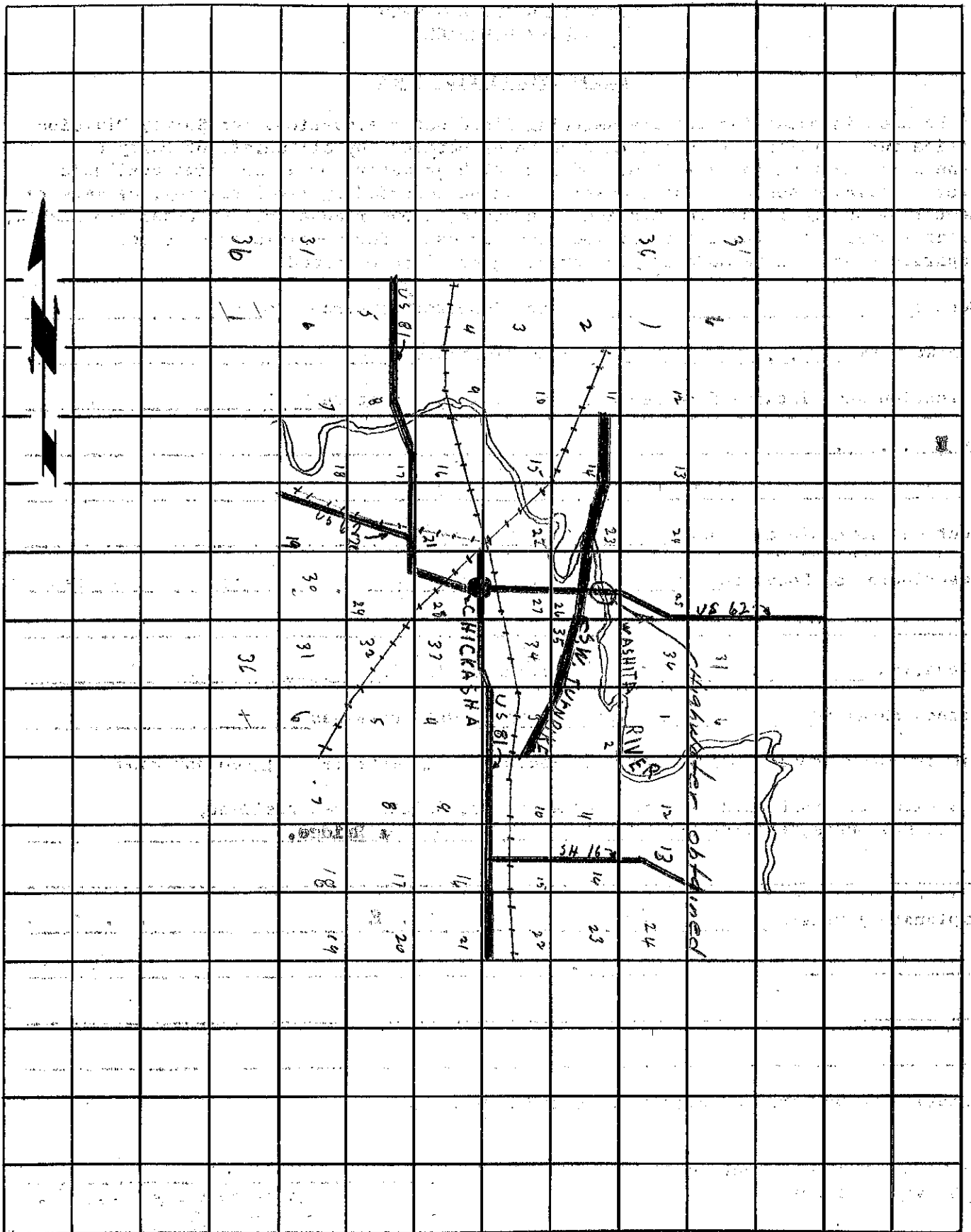
T 8 N

T 7 N

T 7 N

T 6 N

T 6 N



R 8 W

R 7 W

R 6 W