

STATE OF OKLAHOMA
DEPARTMENT OF HIGHWAYS
PLANS AND SURVEY DEPARTMENT

FLOOD INFORMATION FORM

To be used in obtaining and transmitting flood water elevations for Plans & Survey office record files. This information to be obtained by all Chiefs of Party in their vicinity in times of unusual high water, or at any time available from a reliable source. The elevations can be recorded by level reading, by measurement from bridge floor, in relation to a house, above roadbed or any other dependable, clear manner that fits the situation, the highest order possible to be used. Separate report to be made on each crossing or place obtained.

County GRADY Date highwater occurred May 19, 1951

Highway number U.S. 81 Name of stream Little Washita River

Direction and distance from nearest town, village or store Approx 5 1/2 M. South of Chickasha or Approx 0.5 M. West & 0.5 M. South of Ninnekah.

Section, Township and Range See 33 T-6-N. R-7-W

Description of Location At the Little Washita River Bridge on U.S. Highway 81

Method obtained By Measurement ^{Below} Bridge Floor with Hand level

Elevation 2.0 low of that was + End of Bridge Floor Source of levels F.A.P. 208 E Plans
Elev 1088.5

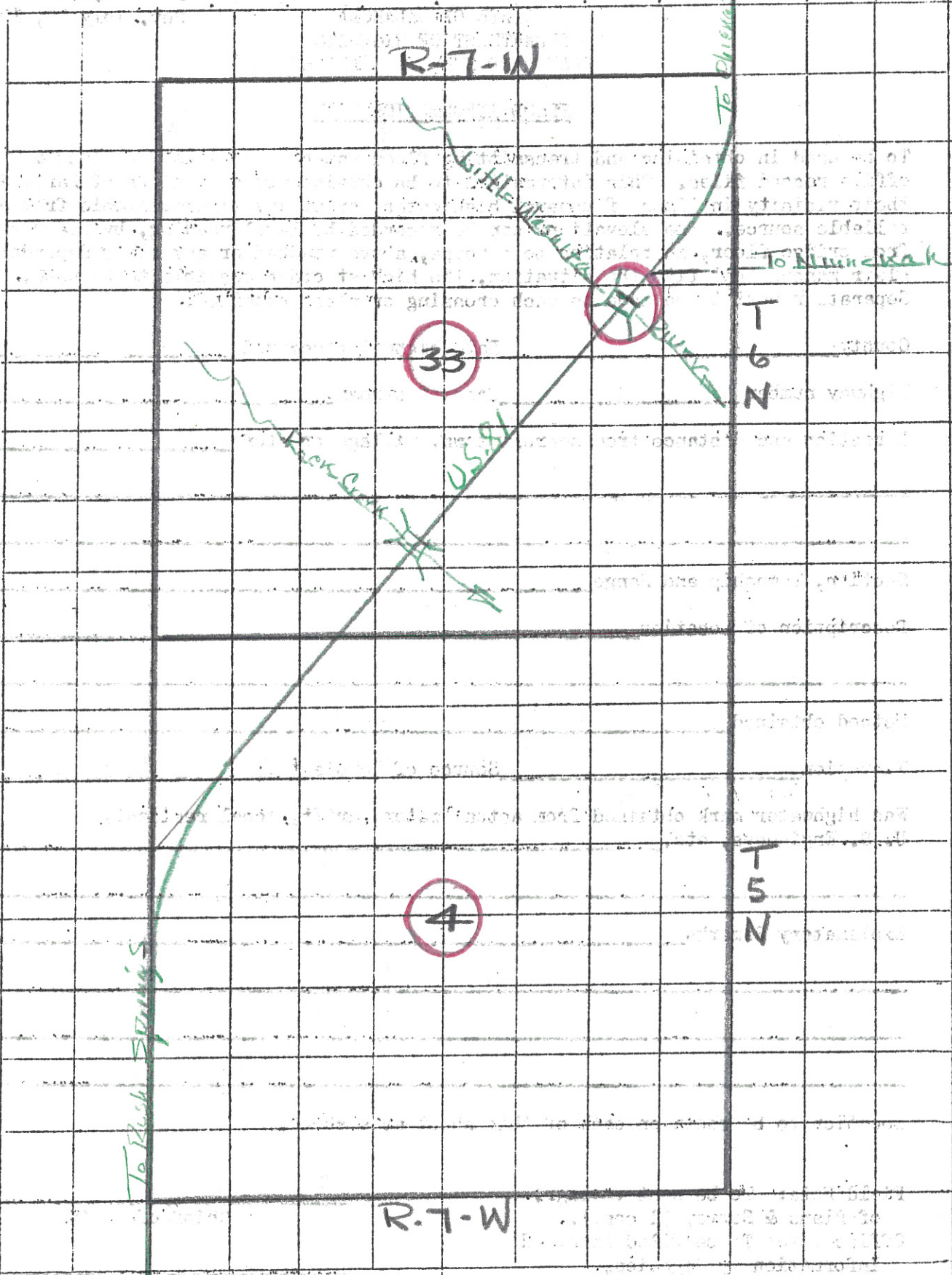
Was highwater mark obtained from actual water, drift, local resident, U. S. Engineers, etc? H.W. was obtained from Drift and was checked on with Mr. Swede Osborn Div Eng At Duncan

Explanatory Remarks This is a Record Highwater
This Bridge was built under S.A.F. 208 A in 1927

Location to be shown on back of this sheet as a check.

Field Note: To be sent to Engr. of Plans & Survey (1 copy).
Office Note: To be filed in Flood Information by Counties.

C.S. Smith
Chief of Party
June 14, 1951
Date



R-T-W

33

4

R-T-W

T 6 N

T 5 N

To Phenixville

To Rush Springs

To Muncie, Mo. →

