

STATE OF OKLAHOMA
DEPARTMENT OF HIGHWAYS
SURVEY DIVISION

Survey Division
Form No. 16
Rev. Sept. 10, 1961

FLOOD INFORMATION FORM

To be used in obtaining and transmitting flood water elevations for Survey Division office record files. This information to be obtained by all Chiefs of Party or others in their vicinity in times of unusual high water, or at any time available from a reliable source. The elevations can be recorded by level reading, by measurement from bridge floor, in relation to a house, above roadbed or any other dependable, clear manner that fits the situation, the highest order possible to be used. Separate report to be made on each crossing or place obtained.

County GARVIN Date highwater occurred OCTOBER 21, 1983

Highway number S.H. 76 Name of stream WASHITA RIVER

Direction and distance from nearest town, village or store FROM JUNCTION OF
S.H. 19 AND S.H. 76 IN LINDSAY, OKLAHOMA APPROXIMATELY 1.3 MILES SOUTH.

Section, Township and Range SEC. 15, T-4-N, R-4-W

Description of Location 6.1 FEET BELOW BRIDGE SEAT AT SOUTH END OF BRIDGE.

Elevation _____ Source of levels _____

Method obtained FENNEL ENGR'S LEVEL Date obtained OCTOBER 25, 1983

Did it appear to be normal medium extreme do not know

Was highwater mark obtained from actual water, drift, local resident,
U. S. Engineers, etc.? DRIFTS IN TREES & ALONG RIVER BANKS UPSTREAM.

Explanatory Remarks OVER 8 INCHES OF RAIN ON OCTOBER 20, 1983, ON TOP OF
4 TO 5 INCHES WHICH FELL DURING 10-17 TO 10-19 CAUSED FLOODING ALONG
WASHITA RIVER AND ITS LOW AREAS, FORCING EVACUATION OF HUNDREDS OF
PEOPLE.

Location to be shown on back of this sheet as a check.

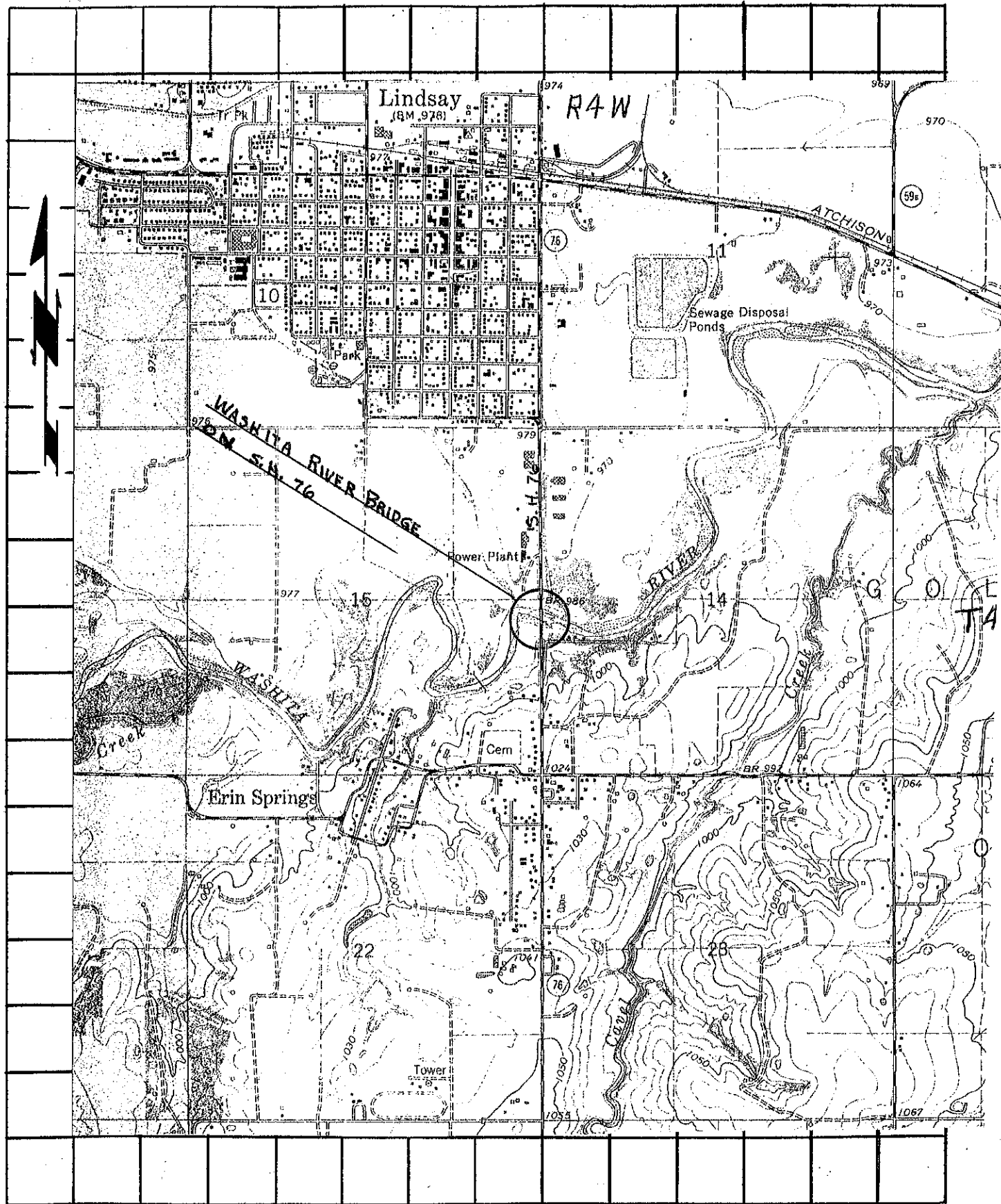
Field Note: To be sent to
Survey Engineer

Jodie R. Rehacek
Chief of Party

12-8-83
Date

Copy to Bridge 12-21-83
SWP

LOCATION No. 6



Lindsay
(8M, 978)

R4W

ATCHISON

WASHITA RIVER BRIDGE
S.H. 76

Sewage Disposal Ponds

Lower Plant

WASHITA RIVER

Erin Springs

Cem

Tower

