

STATE OF OKLAHOMA  
DEPARTMENT OF HIGHWAYS  
PLANS AND SURVEY DEPARTMENT

FLOOD INFORMATION FORM

To be used in obtaining and transmitting flood water elevations for Plans & Survey office record files. This information to be obtained by all Chiefs of Party in their vicinity in times of unusual high water, or at any time available from a reliable source. The elevations can be recorded by level reading, by measurement from bridge floor, in relation to a house, above roadbed or any other dependable, clear manner that fits the situation, the highest order possible to be used. Separate report to be made on each crossing or place obtained.

County Garfield Date highwater occurred October 2, 1959

Highway number US 60 & SH 15 Name of stream Turkey Creek

Direction and distance from nearest town, village or store Approx 0.4 miles east of Lehoma.

Section, Township and Range Between Sections 8 & 17, T22N, R8W

Description of Location At Turkey Creek Bridge on Highways US 60 & SH 15 Approx. 0.4 miles east of Lehoma.

Method obtained Fennel Level

Elevation Highwater was up 0.9 Above concrete floor of Bridge at East End of Bridge.

~~Sources of elevations~~  
Same Highwater was down 2.9 ft. from "X" on top of Handrail at east end of South Hdwl. Br. Was highwater mark obtained from actual water, drift, local resident, U. S. Engineers, etc? Water marks and drift.

Explanatory Remarks This highwater was taken about 300 ft. to 600 ft. east of bridge where it flooded over road.

Location to be shown on back of this sheet as a check.

Field Note: To be sent to Engr. of Plans & Survey (1 copy).  
Office Note: To be filed in Flood Information by Counties.

RECEIVED  
OCT 19 1959  
PLANS & SURVEY DEPARTMENT

Carroll D. Son  
Chief of Party  
October 5, 1959  
Date

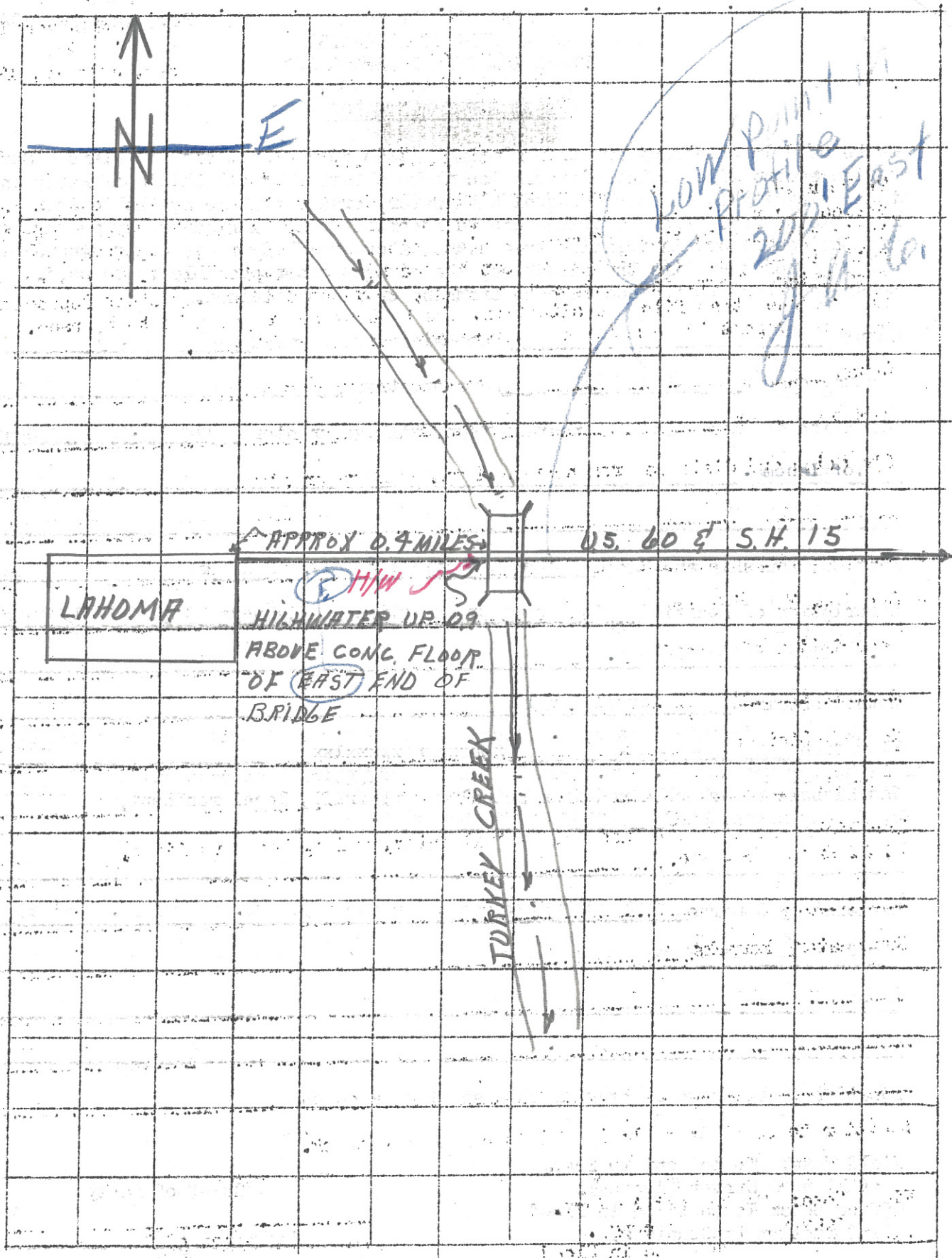
Noted in Level Book 1 Page 63.  
X-Ref. Br. Book 1 Page 6  
" " " " 2 Page 4

J.A. Campbell

Br Flood = 222.07  
1.9  
1222.97

X on Handrail = 1225.82  
2.9  
1222.92

H.W. ✓  
1222.95  
LOC. No. 4



LAHOMA

APPROX 0.4 MILES

U.S. 60 & S.H. 15

TO ENID

HIGHWATER UP 0.9 ABOVE CONC. FLOOR OF EAST END OF BRIDGE

TURKEY CREEK

LOW POINT PROTECTIVE 20' East of ...