

STATE OF OKLAHOMA
DEPARTMENT OF HIGHWAYS
PLANS AND SURVEY DEPARTMENT

FLOOD INFORMATION FORM

To be used in obtaining and transmitting flood water elevations for Plans & Survey office record files. This information to be obtained by all Chiefs of Party in their vicinity in times of unusual high water, or at any time available from a reliable source. The elevations can be recorded by level reading, by measurement from bridge floor, in relation to a house, above roadbed or any other dependable, clear manner that fits the situation, the highest order possible to be used. Separate report to be made on each crossing or place obtained.

County GARFIELD Date highwater occurred July 10, & 11, 1963

In Underpass - US 81 on Grand Ave. At intersection
Highway number Grand & SL & SF RR. Name of stream _____

Direction and distance from nearest town, village or store IN ENID OKLAHOMA

Section, Township and Range T-22-N- R-6-W Section -7

Description of Location In Underpass on US 81 Buisness Route on North Grand Ave.
at Intersection of Grand Ave. and St. Louis & San Francisco Railroad.

Method obtained Y-Level

Elevation _____ Source of levels _____

Was highwater mark obtained from actual water, drift, local resident,
U. S. Engineers, etc? Highwater Mark on underpass abutments as observed by me
Charles I. Hillis on the morning of July 11, 1963.
7.0 feet above floor of underpass.

Explanatory Remarks Started raining about 9:30 PM on the night of July 10, 63,
According to report published in the Enid Daily Eagle, Vance Air Force Base Reported
~~4.93~~ 4.93 Inches at 3:55 AM. The US Weather Bureau Observation Station At KCRG
Radio Station Reported on the 6:00 AM Weather Report. that 6:52 Inches had been
Recorded. July 11, 1963.

Location to be shown on back of this sheet as a check.

Field Note: To be sent to Engr.
of Plans & Survey (1 copy).
Office Note: To be filed in Flood
Information by Counties.

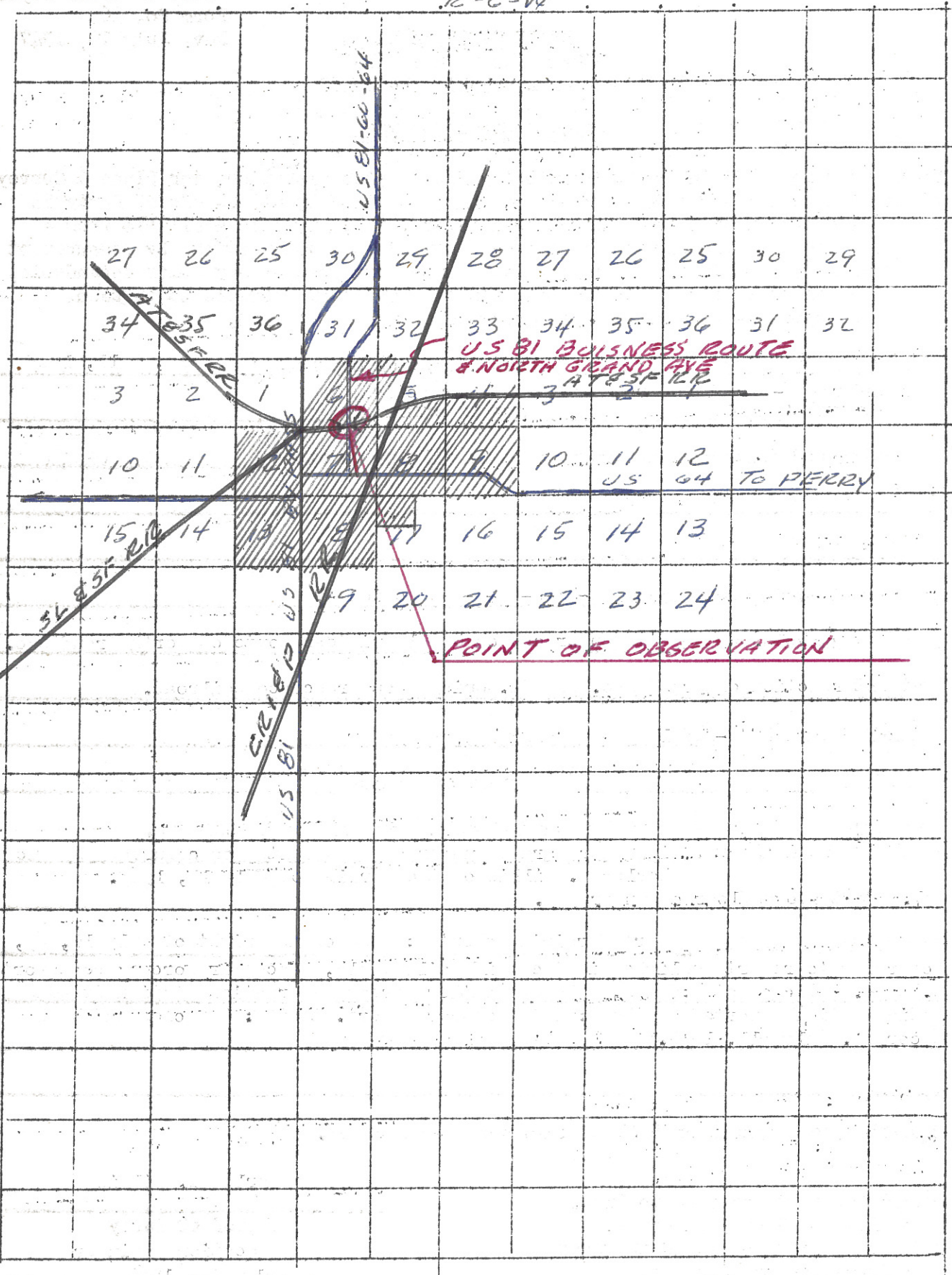
Charles I. Hillis

Chief of Party
Location Engineer

July 29, 1963
Date

Location NO. 6

12-6-44



T
2
N