

STATE OF OKLAHOMA
DEPARTMENT OF HIGHWAYS
PLANS AND SURVEY DEPARTMENT

FLOOD INFORMATION FORM

To be used in obtaining and transmitting flood water elevations for Plans & Survey office record files. This information to be obtained by all Chiefs of Party in their vicinity in times of unusual high water, or at any time available from a reliable source. The elevations can be recorded by level reading, by measurement from bridge floor, in relation to a house, above roadbed or any other dependable, clear manner that fits the situation, the highest order possible to be used. Separate report to be made on each crossing or place obtained.

County Garfield Date highwater occurred Sept. 4, 1963

Highway number SH 15 & 74 Name of stream Red Rock Creek

Direction and distance from nearest town, village or store (5 1/2 miles North of Garber Oklahoma,) (1.0 mile South of intersection of SH 15 & SH 74)

Section, Township and Range T-24-N- R-4-W

Description of Location Highwater on Red Rock Creek on North and South sec. line between Sections 25-26- T-24-N-R-4-W 5 1/2 miles North of Garber Oklahoma

Method obtained Y-Level

Elevation None Source of levels None

Was highwater mark obtained from actual water, drift, local resident, U. S. Engineers, etc? (From Actual highwater) in Field. Highwater was 2.41 above hdwl. 4.96 above bridge floor. and 6.21 above top opening. Highwater was 2.41 above (X on NW corner of West Hdwl of bridge. Red Rock Creek.

Explanatory Remarks _____

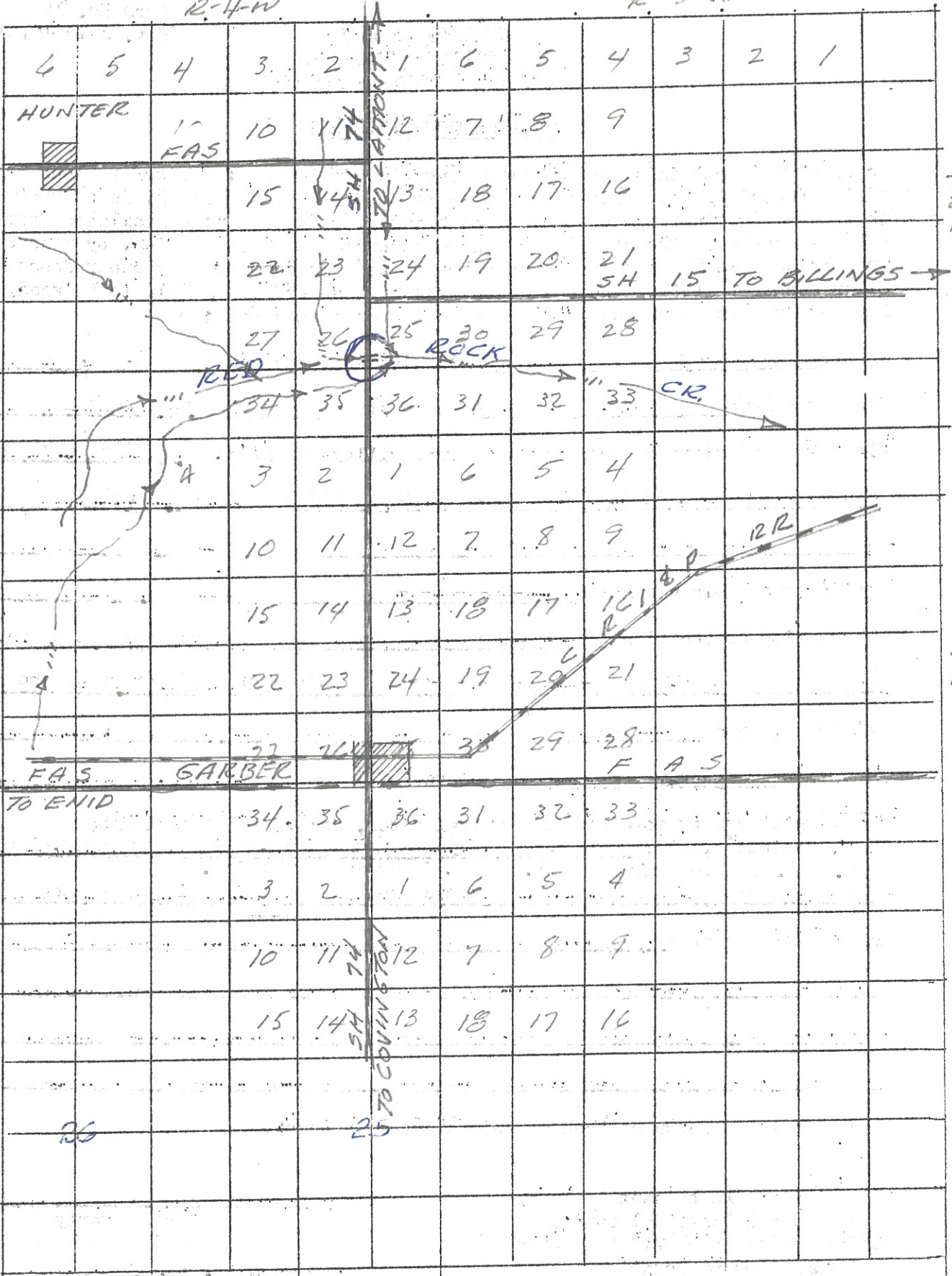
Location to be shown on back of this sheet as a check.

Field Note: To be sent to Engr. of Plans & Survey (1 copy).
Office Note: To be filed in Flood Information by Counties.

Chas. L. Davis
Chief of Party
Location Engineer
Sept. 4, 1963
Date

R-4-W

R-3-W



T 24 H

T 2 3 H