

STATE OF OKLAHOMA  
DEPARTMENT OF HIGHWAYS  
SURVEY DIVISION

FLOOD INFORMATION FORM

To be used in obtaining and transmitting flood water elevations for Survey Division office record files. This information to be obtained by all Chiefs of Party or others in their vicinity in times of unusual high water, or at any time available from a reliable source. The elevations can be recorded by level reading, by measurement from bridge floor, in relation to a house, above roadbed or any other dependable, clear manner that fits the situation, the highest order possible to be used. Separate report to be made on each crossing or place obtained.

County CUSTER Date highwater occurred OCTOBER 4, 1986

Highway number S.H. 73 Name of stream WASHITA RIVER

Direction and distance from nearest town, village or store 2.2 MILES WEST OF CLINTON,  
OKLAHOMA ON S.H. 73

Section, Township and Range BETWEEN SECTIONS 17 & 20, T-12-N, R-17-W

Description of Location HIGHWATER ROSE TO 8.8' BELOW BRIDGE SEAT ON WEST END OF  
BRIDGE.

Elevation 1512.9 Source of levels F.A.S.P. NO. S-1032(6)S U.S. 73 PLANS

Method obtained HAND LEVEL Date obtained OCTOBER 6, 1986

Did it appear to be  normal  medium  extreme  do not know

Was highwater mark obtained from actual water, drift, local resident,  
U. S. Engineers, etc.? DRIFT AND HIGHWATER MARK.

Explanatory Remarks HIGHWATER OCCURRED FROM 10" OF RAIN FROM OCTOBER 1 THRU  
OCTOBER 3, 1986.

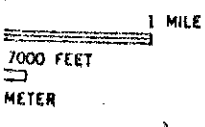
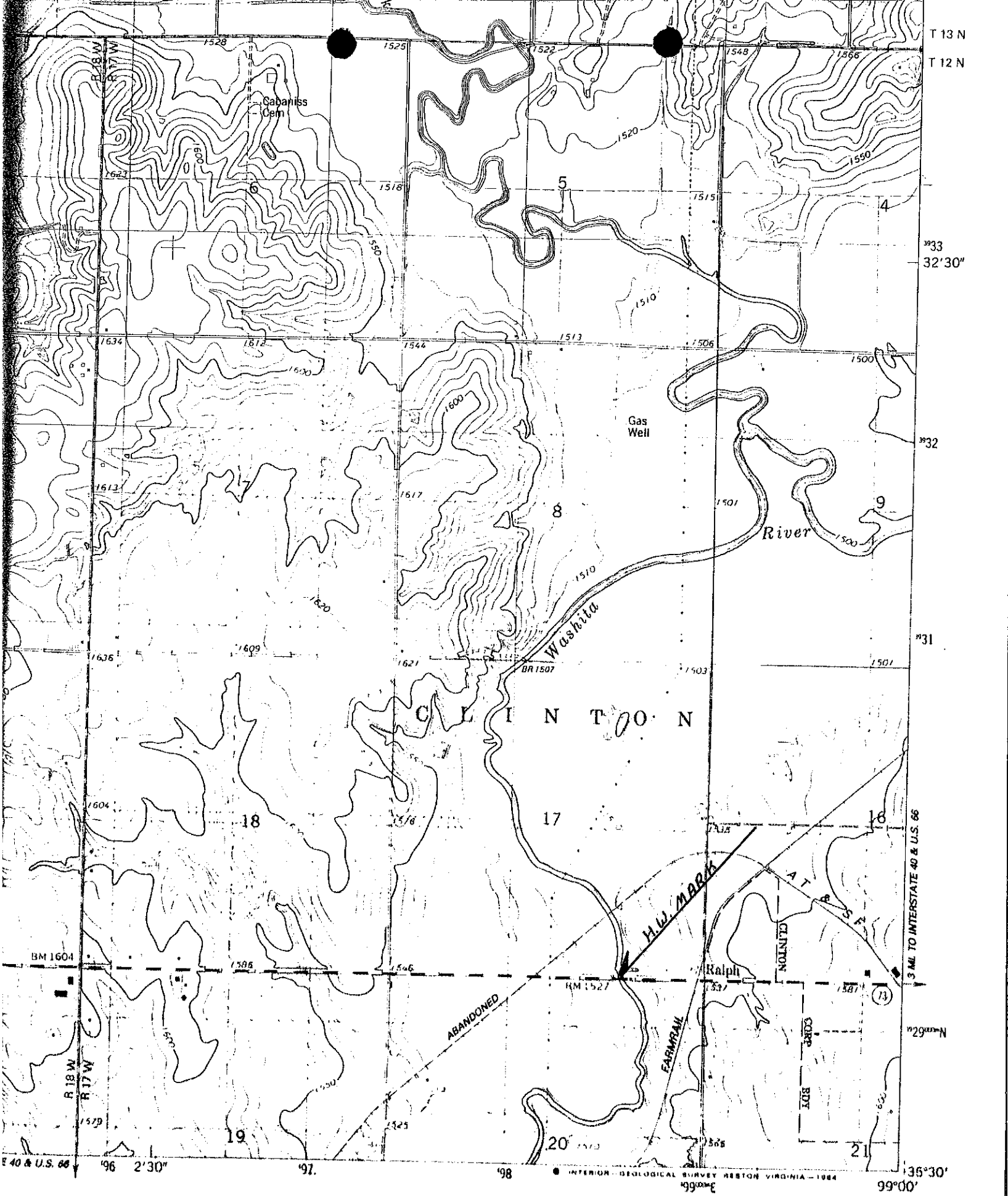
Location to be shown on back of this sheet as a check.

Field Note: To be sent to  
Survey Engineer

Bruce A. Leffingwell  
TRANS. SPECIALIST II

OCTOBER 8, 1986  
Date

LOCATION No. 19



ROAD CLASSIFICATION

Primary highway, hard surface		Light duty road, hard or improved surface	
Secondary highway, hard surface		Unimproved road	

INFORMATION - GEOLOGICAL SURVEY REGION VIRGINIA - 1984

(BESSIE) 1984 N. NW