

STATE OF OKLAHOMA
DEPARTMENT OF HIGHWAYS
SURVEY DIVISION

FLOOD INFORMATION FORM

To be used in obtaining and transmitting flood water elevations for Survey Division office record files. This information to be obtained by all Chiefs of Party or others in their vicinity in times of unusual high water, or at any time available from a reliable source. The elevations can be recorded by level reading, by measurement from bridge floor, in relation to a house, above roadbed or any other dependable, clear manner that fits the situation, the highest order possible to be used. Separate report to be made on each crossing or place obtained.

County Creek Date highwater occurred May 2, 1993
Highway number EW 70.1 & NS 368 County Road Name of stream Polecat Creek County Road
Direction and distance from nearest town, village or store 2.1 miles South & 1
mile East of Olive Ok. mile East of Olive Ok.

Section, Township and Range Sec. 33, T-18-N, R-8-E Sec. 33, T-18-N

Description of Location Polecat Creek Bridge approx. 500' South of S.H. 33 Polecat Creek Bridge
on NS 368 County Road. on NS 368 County Road.

Elevation Down 7.7' from middle Source of levels Down 7.7' from middle
of N. End Bridge of N. End Bridge

Method obtained Hand Level and Rod Date obtained May 3, 1993

Did it appear to be normal medium extreme do not know

Was highwater mark obtained from actual water, drift, local resident,
U. S. Engineers, etc.? Drift

Explanatory Remarks See Creek County Map, Sheet 2 of 2 sheets for location of this
point, shown as Creek County # 35

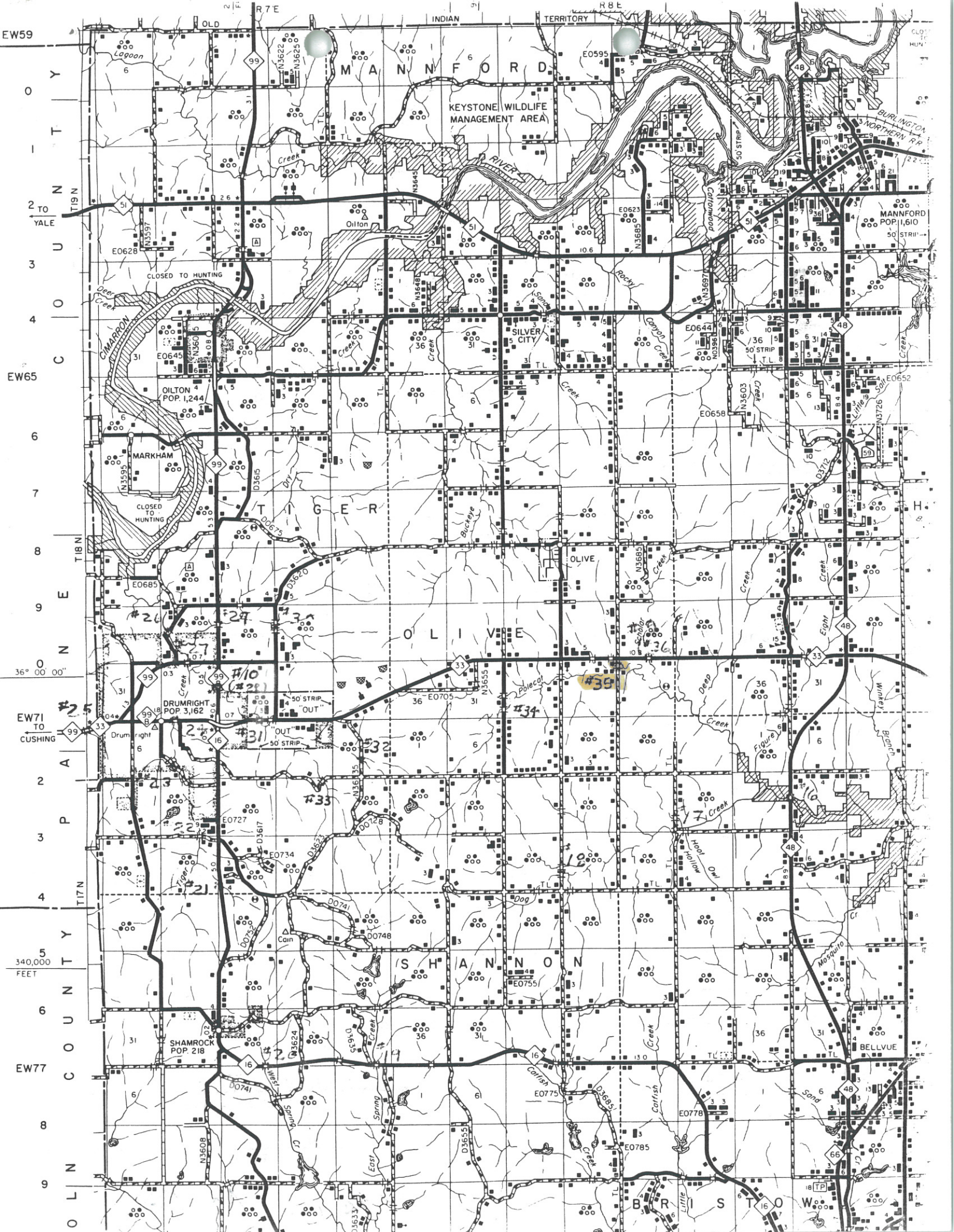
Location to be shown on back of this sheet as a check.

Field Note: To be sent to
Survey Engineer

Leif Higinbotham
Chief of Party

May 3, 1993
Date

LOCATION No. 62



EW59

0
1
2
3
4
5
6
7
8
9
0
1
2
3
4
5
6
7
8
9

T19N
TO
YALE

EW65

T18N

36° 00' 00"

EW71
TO
CUSHING

A

P

3

4
340,000
FEET

6
EW77

C

8
9
O

L

R7E INDIAN TERRITORY R8E

MANNFORD

KEYSTONE WILDLIFE
MANAGEMENT AREA

SILVER CITY

TIGER

OLIVE

SHANNON

BURLINGTON
NORTHERN RR

MANNFORD
POP. 1,610

CLOSED TO
HUNTING

CLOSED TO
HUNTING

DRUMRIGHT
POP. 3,162

SHAMROCK
POP. 218

OLTON
POP. 1,244

#10
#20
#31
#32
#33

#39

Deer Creek

Oilton

Rocky Creek

Markham

Drumright

Shamrock

Shannon

Bellvue

Spring Creek

Corral Creek

Deer Creek

Deer Creek

Deer Creek

Deer Creek

Deer Creek

Deer Creek

Deer Creek

Deer Creek

Deer Creek

Deer Creek

Deer Creek

Deer Creek

Deer Creek

Deer Creek

Deer Creek

Deer Creek

Deer Creek

Deer Creek

Deer Creek

Deer Creek

Deer Creek

Deer Creek

Deer Creek

Deer Creek

Deer Creek

Deer Creek

Deer Creek

Deer Creek

Deer Creek

Deer Creek

Deer Creek

Deer Creek

Deer Creek

Deer Creek

Deer Creek

Deer Creek

Deer Creek

Deer Creek

Deer Creek

Deer Creek

Deer Creek

Deer Creek

Deer Creek

Deer Creek

Deer Creek

Deer Creek

Deer Creek

Deer Creek