

STATE OF OKLAHOMA
DEPARTMENT OF HIGHWAYS
PLANS AND SURVEY DEPARTMENT**RECEIVED**

AUG 4 1958

PLANS & SURVEY

SWO 2014 (1) - US 66 -
CRAIG CO.

FLOOD INFORMATION FORM

To be used in obtaining and transmitting flood water elevations for Plans & Survey office record files. This information to be obtained by all Chiefs of Party in their vicinity in times of unusual high water, or at any time available from a reliable source. The elevations can be recorded by level reading, by measurement from bridge floor, in relation to a house, above roadbed or any other dependable, clear manner that fits the situation, the highest order possible to be used. Separate report to be made on each crossing or place obtained.

County Craig Date highwater occurred July 12, 1958
 Highway number US 66 Name of stream Little Cabin Creek - E. of Vinita
Cabin Creek, West of Vinita

Direction and distance from nearest town, village or store
Little Cabin Creek, 1 1/2 miles East of Vinita on US 66
Cabin Creek, 1/2 mile West on Vinita on US 66

Section, Township and Range Little Cabin Cr. - Between Sec 24 & 25, T-25-N, R-20-E
Cabin Creek - Between Sec. 21 & 28, T-25-N, R-20-E.

Description of Location Little Cabin Cr. on US 66, 1 1/2 miles E. Vinita.
Cabin Creek on US 66, 1/2 mile W. Vinita.

Method obtained Wye Level
 Elevation See map on back. Source of levels USO&GS level datum, see SWO 2014 (1) - US 66 - Craig Co.

Was highwater mark obtained from actual water, drift, local resident, U. S. Engineers, etc? Water marks left on signs etc. - Hi-Water elevations obtained in the field on July 14, 1958 by Rees Day Moran, Jr., Chief of Party and H.E. Brown, Chairman on this party.

Explanatory Remarks USO & GS level datum on this Hi-Water, see level books on SWO 2014 (1) US 66 - Craig Co. - Hi-Water occurred during tornado weather.
See map on back for other information - Picture obtained from news paper attached shows hi-water east of Vinita on Little cabin creek.

Location to be shown on back of this sheet as a check.

Field Note: To be sent to Engr.
 of Plans & Survey (1 copy).
 Office Note: To be filed in Flood
 Information by Counties.

Rees Day Moran Jr.
 Chief of Party

August 2, 1958

Date

152

Little Cabin Creek
BM = Centerline bridge and paving

East end of bridge. See cross-sections
on SMO 2014 (1) - US 66, Extended survey -
for USO & GS level datum on bridge.

HI-Water = 3.5 feet below BM & Bridge Floor
HI-Water obtained from water marks on signs etc.
on July 14, 1958.

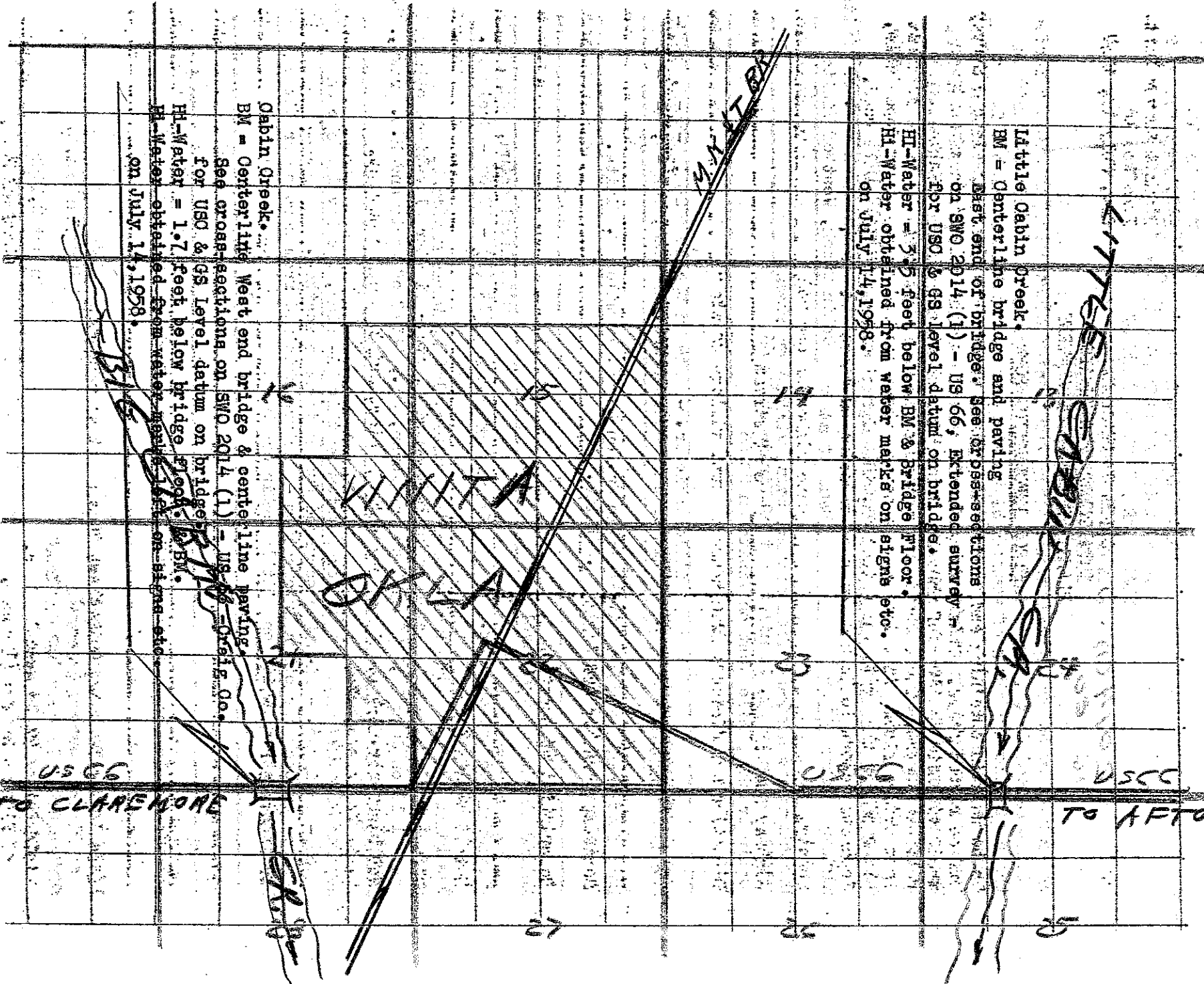
Cabin Creek.

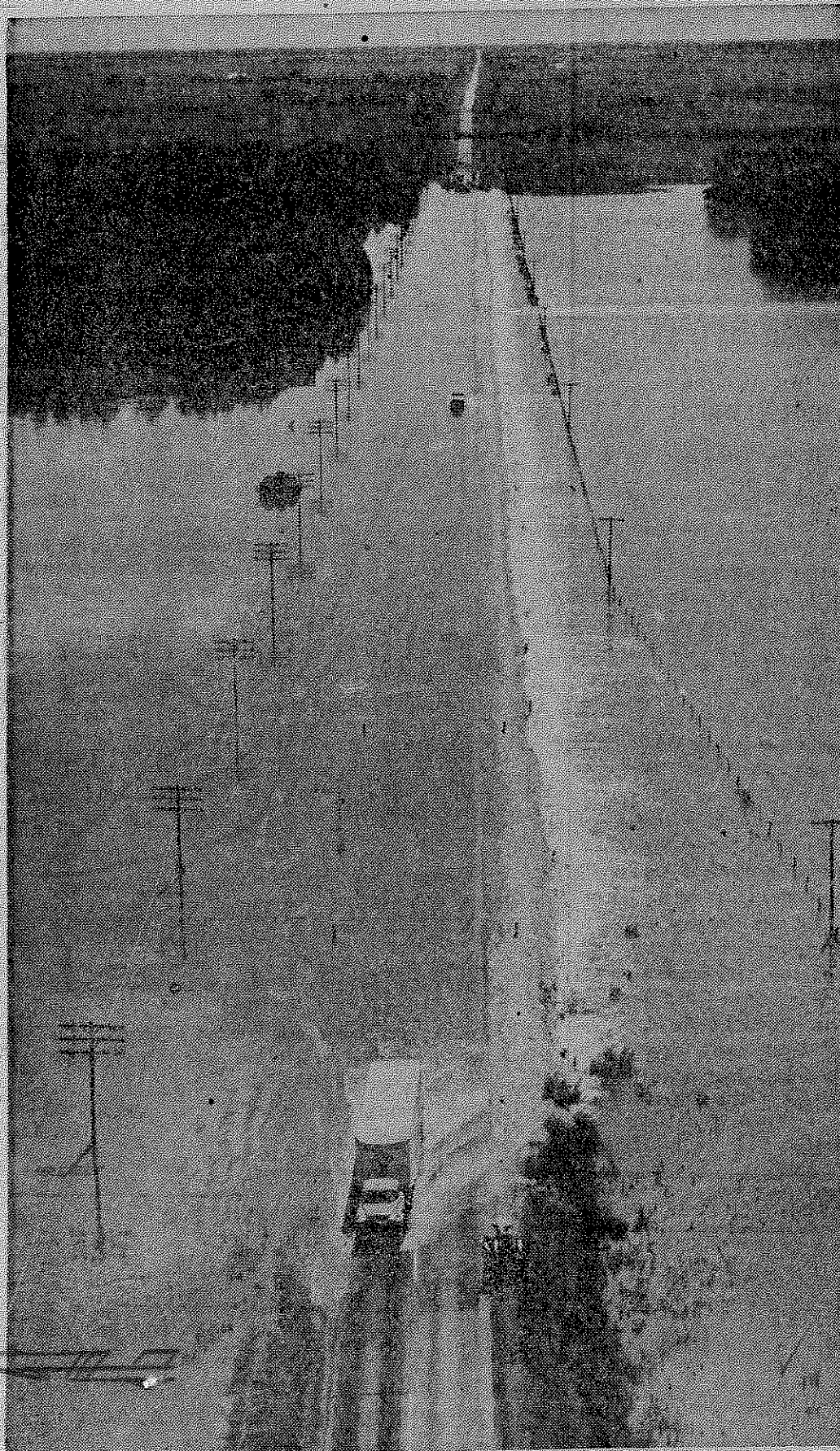
BM = Centerline West end bridge & centerline paving
See cross-sections on SMO 2014 (1) - US 66 - Oriskany Co.
For USO & GS Level datum on bridge.

HI-Water = 1.7 feet below bridge floor. BM.
HI-Water obtained from water marks on signs etc.
on July 14, 1958.

USGS
TO CLAREMORE

USGS
TO AFTON





WATER COVERS ROAD—US 66, east of Vinita, was closed for a time Saturday by a wall of water caused by torrential rains. The water spread over a quarter of a mile. Shortly before noon traffic began weaving its way on the highway as the waters began to recede. Telephone lines to the area were knocked out by the storm. (Tribune Airphoto).