

STATE OF OKLAHOMA  
DEPARTMENT OF HIGHWAYS  
PLANS AND SURVEY DEPARTMENT

FLOOD INFORMATION FORM

To be used in obtaining and transmitting flood water elevations for Plans & Survey office record files. This information to be obtained by all Chiefs of Party in their vicinity in times of unusual high water, or at any time available from a reliable source. The elevations can be recorded by level reading, by measurement from bridge floor, in relation to a house, above roadbed or any other dependable, clear manner that fits the situation, the highest order possible to be used. Separate report to be made on each crossing or place obtained.

County Comanche Date highwater occurred May 17, 1951

Highway number S.H. 65 Name of stream \_\_\_\_\_

Direction and distance from nearest town, village or store 8.2 Miles South and 1 Mile West of Junction of S.H. 178 S.H. 65 on S.H. 65

Section, Township and Range Belwain Sec 13-T2N-R10NE Sec 18-T2N-R9W

Description of Location At the N.E. Cor. of East H.W. of 6'x4' Concrete Box

Method obtained \_\_\_\_\_

Elevation H.W. is 0.3 Lower than N.E. Corner of E. H.W. of 6'x4' Box Source of levels \_\_\_\_\_

Was highwater mark obtained from actual water, drift, local resident, U. S. Engineers, etc? H.W. obtained from definite water mark on head wall

Explanatory Remarks Obtained A.B. Stephens and D.D. Clifton.

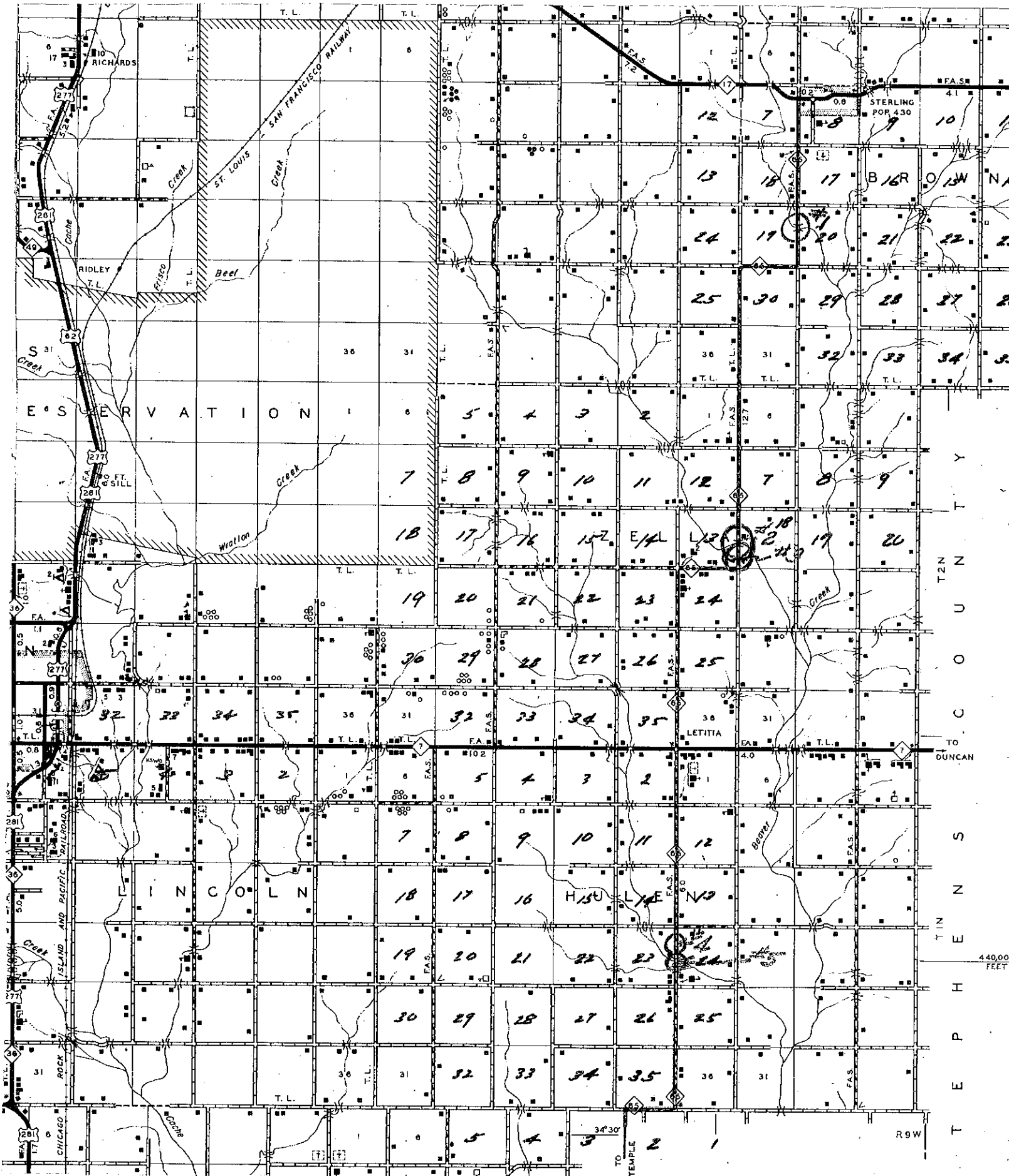
Location to be shown on back of this sheet as a check.

Field Note: To be sent to Engr. of Plans & Survey (1 copy).  
Office Note: To be filed in Flood Information by Counties.

A.B. Stephens  
Chief of Party  
Res Engineer  
May 25, 1951  
Date

NOTE: SEE NO. 3 ATTACHED MAP FOR LOCATION

Loc. No. 1B



T2N  
 T3N  
 T4N  
 T5N  
 T6N  
 T7N  
 T8N  
 T9N  
 T10N  
 T11N  
 T12N  
 T13N  
 T14N  
 T15N  
 T16N  
 T17N  
 T18N  
 T19N  
 T20N  
 T21N  
 T22N  
 T23N  
 T24N  
 T25N  
 T26N  
 T27N  
 T28N  
 T29N  
 T30N  
 T31N  
 T32N  
 T33N  
 T34N  
 T35N  
 T36N  
 T37N  
 T38N  
 T39N  
 T40N  
 T41N  
 T42N  
 T43N  
 T44N  
 T45N  
 T46N  
 T47N  
 T48N  
 T49N  
 T50N  
 T51N  
 T52N  
 T53N  
 T54N  
 T55N  
 T56N  
 T57N  
 T58N  
 T59N  
 T60N  
 T61N  
 T62N  
 T63N  
 T64N  
 T65N  
 T66N  
 T67N  
 T68N  
 T69N  
 T70N  
 T71N  
 T72N  
 T73N  
 T74N  
 T75N  
 T76N  
 T77N  
 T78N  
 T79N  
 T80N  
 T81N  
 T82N  
 T83N  
 T84N  
 T85N  
 T86N  
 T87N  
 T88N  
 T89N  
 T90N  
 T91N  
 T92N  
 T93N  
 T94N  
 T95N  
 T96N  
 T97N  
 T98N  
 T99N  
 T100N

440,000 FEET

R9W