

STATE OF OKLAHOMA  
DEPARTMENT OF HIGHWAYS  
SURVEY DIVISION

FLOOD INFORMATION FORM

To be used in obtaining and transmitting flood water elevations for Survey Division office record files. This information to be obtained by all Chiefs of Party or others in their vicinity in times of unusual high water, or at any time available from a reliable source. The elevations can be recorded by level reading, by measurement from bridge floor, in relation to a house, above roadbed or any other dependable, clear manner that fits the situation, the highest order possible to be used. Separate report to be made on each crossing or place obtained.

County Coal Date highwater occurred Oct. 9, 1970

Highway number SH. 43 Name of stream Muddy Boggy

Direction and distance from nearest town, village or store 1 Mile east of east city limits of Coalgate

Section, Township and Range Sec. 30 - T 1 N - R 11 E

Description of Location Centerline of east end of Muddy Boggy bridge floor

Lower than  $\frac{1}{2}$  east end of Bridge  
Elevation 8.6 Lower than floor Source of levels \_\_\_\_\_

Method obtained Hand Level Date obtained Oct. 9, 1970

Did it appear to be  normal  medium  extreme  do not know

Was highwater mark obtained from actual water, drift, local resident, U. S. Engineers, etc.? Actual Water

Explanatory Remarks Water was 1 Ft. over SH. 43 at a point 500 Ft. east of the east end of Boggy bridge. This highwater was caused from a 9" rain over an 8 hour period  
Water was over SH. 43 for Approx. 24 hours.

Location to be shown on back of this sheet as a check.

Field Note: To be sent to  
Survey Engineer  
FILE: FLOOD FILE, COAL CO.  
HC: BRIDGE DIV.

Ray N. Seeley  
Location Engineer Ray N. Seeley  
10-9-70  
Date

LOC. NO. 1

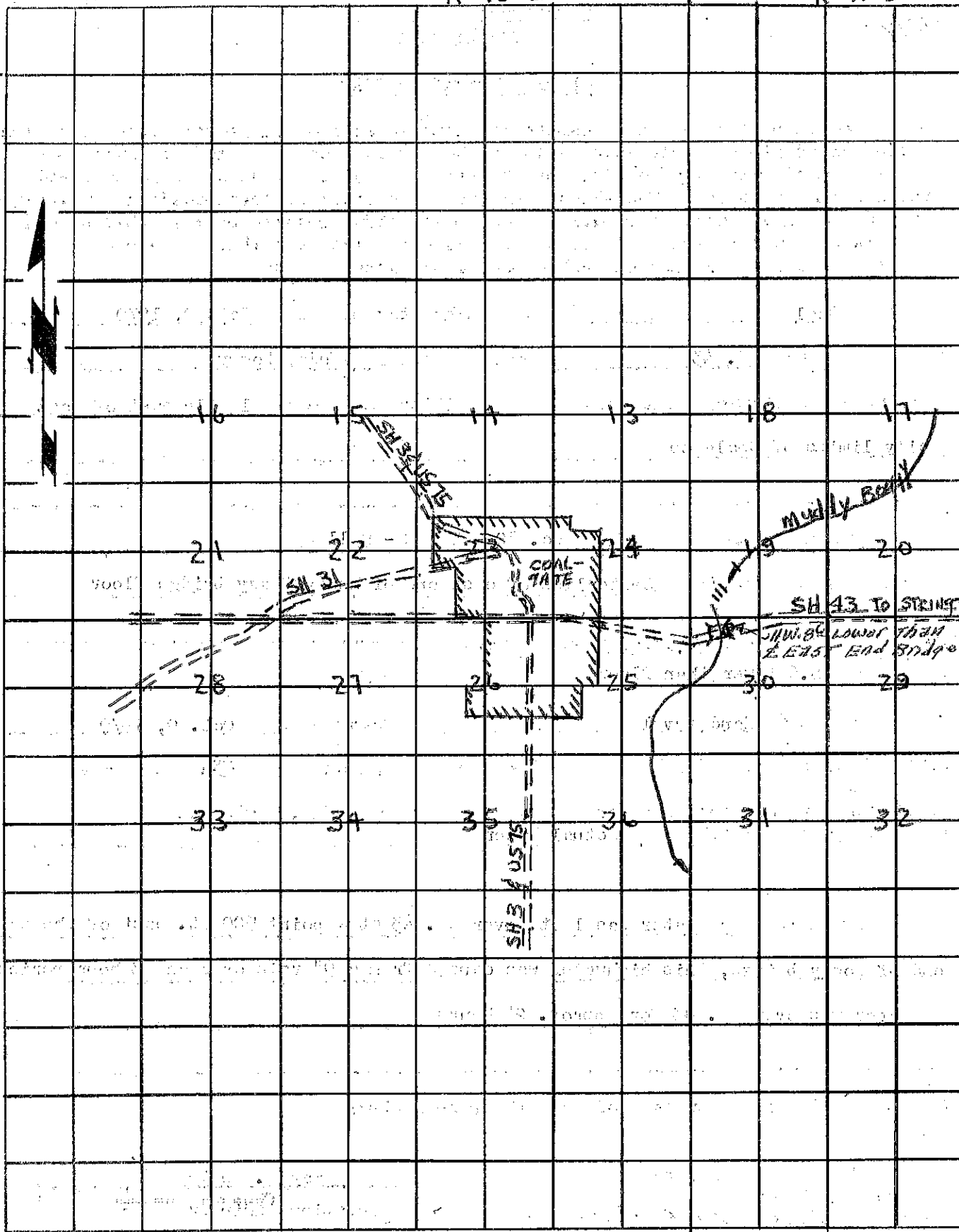
R-10-E

R-11-E



T  
1  
N

T  
1  
N



R-10-E

R-11-E