

RECEIVED
DEC 4 1986
SURVEY DIVISION

STATE OF OKLAHOMA
DEPARTMENT OF HIGHWAYS
SURVEY DIVISION

Survey Division
Form No. 16
Rev. Dec. 2, 1974

FLOOD INFORMATION FORM

To be used in obtaining and transmitting flood water elevations for Survey Division office record files. This information to be obtained by all Chiefs of Party or others in their vicinity in times of unusual high water, or at any time available from a reliable source. The elevations can be recorded by level reading, by measurement from bridge floor, in relation to a house, above roadbed or any other dependable, clear manner that fits the situation, the highest order possible to be used. Separate report to be made on each crossing or place obtained.

County Cherokee Date highwater occurred October 1, 1986

Highway number US 62 Name of stream Illinois River

Direction and distance from nearest town, village or store 1 mile east of Tahlequah

Section, Township and Range Section 26, T17N, R22E

Description of Location At US 62 Bridge over the Illinois River east of Tahlequah

Elevation 689.0 Source of levels SWO 3514(1)

Method obtained Fennel Level Date obtained October 1, 1986

Did it appear to be normal medium extreme do not know

Was highwater mark obtained from actual water, drift, local resident, U. S. Engineers, etc.? Actual water elevation.

Explanatory Remarks Occured after 15" Rain over watershed.

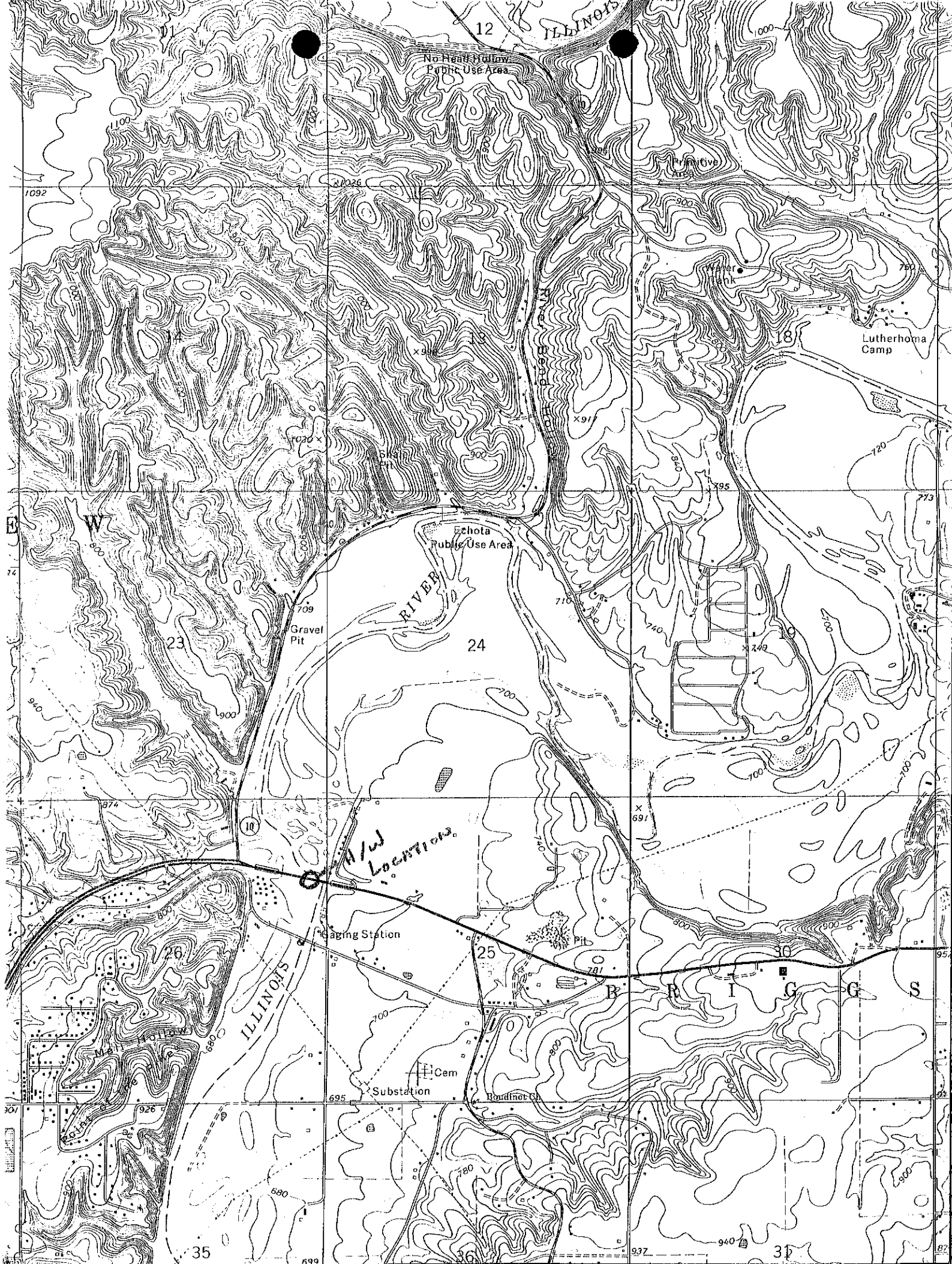
Location to be shown on back of this sheet as a check.

Field Note: To be sent to
Survey Engineer

James Wayne Rogers
Location Engineer

October 9, 1986
Date

LOCATION No. 16



12

No Head Hollow
Public Use Area

Prong
Area

Lutheroma
Camp

Echota
Public Use Area

Gravel
Pit

*H/W
LOCATIONS*

Gaging Station

Substation

Cem

Roadmer Ct

ILLINOIS

ILLINOIS

B I G G S

35

30

1092

74

907

91

2026

1020

674

695

699

645

700

780

24

25

26

12

X 91

X 91

716

X 691

781

937

ILLINOIS

ILLINOIS

ILLINOIS

ILLINOIS

1000

900

800

700

600

500

940

18

720

740

700

600

500

937

700

795

700

700

600

940

700

773

700

700

600

500

940

18

720

740

700

600

500

940

700

773

700

700

600

500

940

18

720

740

700

600

500

940

W

23

26

35

W

23

26

35

W

23

26

35

W

23

26

35

W

23

26

35

W

23

26

35

W

23

26

35

W

23

26

35

W

23

26

35

W

23

26

35

W

23

26

35

W

23

26

35

W

23

26

35

W

23

26

35

W

23

26

35

W

23

26

35

W

23

26

35

W

23

26

35

W

23

26

35

W

23

26

35

W

23

26

35

W

23

26

35

W

23

26

35

W

23

26

35

W

23

26

35

W

23

26

35

W

23

26

35

W

23

26

35

W

23

26

35

W

23

26

35

W

23

26

35

W

23

26

35

W

23

26

35

W

23

26

35

W

23

26

35

W

23

26

35

W

23

26

35

W

23

26

35

W

23

26

35

W

23

26

35

W

23

26

35

W

23

26

35

W

23

26

35

W

23

26

35

W

23

26

35

W

23

26

35

W

23

26

35

W

23

26

35

W

23

26

35

W

23

26

35

W

23

26

35

W

23

26

35

W

23

26

35

W

23

26

35

W

23

26

35

W

23

26

35

W

23

26

35

W

23

26

35

W

23

26

35

W

23

26

35

W

23

26

35

W

23

2