

STATE OF OKLAHOMA
DEPARTMENT OF HIGHWAYS
SURVEY DIVISION

FLOOD INFORMATION FORM

To be used in obtaining and transmitting flood water elevations for Survey Division office record files. This information to be obtained by all Chiefs of Party or others in their vicinity in times of unusual high water, or at any time available from a reliable source. The elevations can be recorded by level reading, by measurement from bridge floor, in relation to a house, above roadbed or any other dependable, clear manner that fits the situation, the highest order possible to be used. Separate report to be made on each crossing or place obtained.

County Canadian Date highwater occurred Sept. 17, 1965

Highway number US 66 Name of stream Six Mile Creek

Direction and distance from nearest town, village or store 1 3/4 miles south and
2 miles east of El Reno

Section, Township and Range Sec. 14 T 12 N R 7 W

Description of Location At bridge over six mile creek on US 66.

Elevation "See remarks" Source of levels _____

Method obtained Wye level & Philadelphia rod Date obtained 9/29/65

Did it appear to be normal medium extreme do not know

Was highwater mark obtained from actual water, drift, local resident, U. S. Engineers, etc.? Silt marks on bridge

Explanatory Remarks Highwater was 1.3 ft. below ⁶L offloor at west end of bridge.
Highwater was caused from a reported 8 to 10 inch rain in approx. 12 hours.
This information was obtained by A. W. Ziegelgruber and B. D. Roden.

Location to be shown on back of this sheet as a check.

Field Note: To be sent to
Survey Engineer

A. W. Ziegelgruber
~~XXXXXXXXXXXX~~ Chief of Party
~~XXXXXXXXXXXX~~
Dec. 20, 1965
Date

Mc

R 8 W

R 7 W

R 6 W

T 13 N

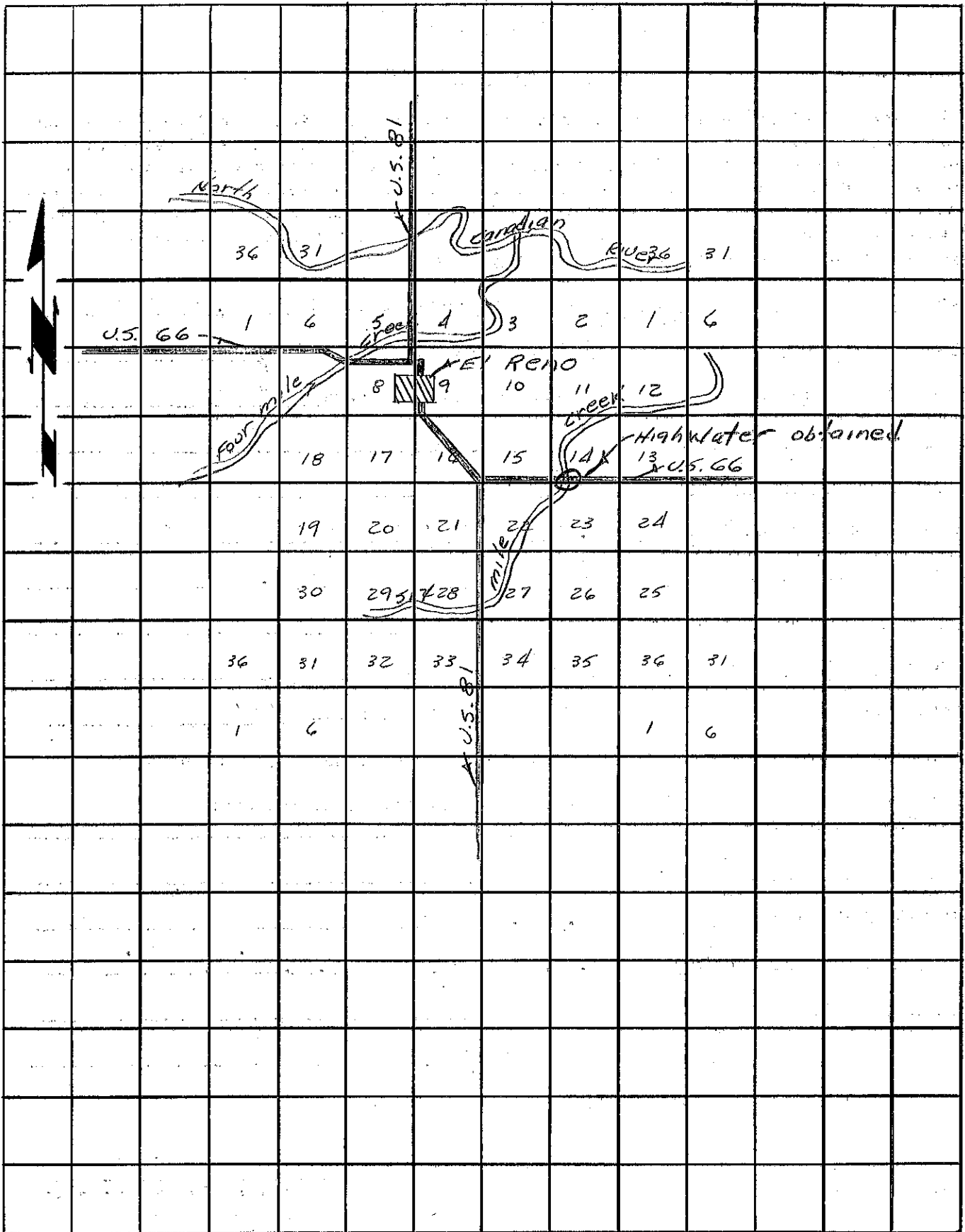
T 13 N

T 12 N

T 12 N

T 11 N

T 11 N



R 8 W

R 7 W

R 6 W