

STATE OF OKLAHOMA
DEPARTMENT OF HIGHWAYS
PLANS AND SURVEY DEPARTMENT

FLOOD INFORMATION FORM

To be used in obtaining and transmitting flood water elevations for Plans & Survey office record files. This information to be obtained by all Chiefs of Party in their vicinity in times of unusual high water, or at any time available from a reliable source. The elevations can be recorded by level reading, by measurement from bridge floor, in relation to a house, above roadbed or any other dependable, clear manner that fits the situation, the highest order possible to be used. Separate report to be made on each crossing or place obtained.

County Canadian County Date highwater occurred October 2, 1959
Highway number US 66 Name of stream Sixmile Creek
Direction and distance from nearest town, village or store Approx 2 miles southeast
Approx.
of El Reno - One mile east of Junction of US 66 & US 81 Highways, Just east of
North & South Section Line Road
Section, Township and Range Between Sections 14 & 25, T12N, R7W
Description of Location On bridge just east of Section Line Road one mile
east of junction of US 81 & US 66
Method obtained cloth tape measured from water mark on bridge
Down 4.0 from Hub Guard at North West Corner of Bridge
Elevation Source of levels
Was highwater mark obtained from actual water, drift, local resident,
U. S. Engineers, etc? Water Marks and Drifts
Explanatory Remarks Water did not cross US 66 Highway but did flood over
a large amount of land on south side of Highway.

Location to be shown on back of this sheet as a check.

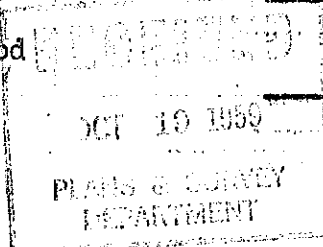
Field Note: To be sent to Engr.
of Plans & Survey (1 copy).
Office Note: To be filed in Flood
Information by Counties.

Carroll D. San

Chief of Party

October 2, 1959

Date



LOC. NO. 6



EL REND

HIGHWATER DOWN
4.0 FROM HUB
GUARD ON N. W
CORNER

SIX MILE CREEK

H/W

APPROX 1 MILE

US 66

US 81

N. S. SECTION LINE

