

STATE OF OKLAHOMA
DEPARTMENT OF HIGHWAYS
PLANS AND SURVEY DEPARTMENT

FLOOD INFORMATION FORM

To be used in obtaining and transmitting flood water elevations for Plans & Survey office record files. This information to be obtained by all Chiefs of Party in their vicinity in times of unusual high water, or at any time available from a reliable source. The elevations can be recorded by level reading, by measurement from bridge floor, in relation to a house, above roadbed or any other dependable, clear manner that fits the situation, the highest order possible to be used. Separate report to be made on each crossing or place obtained.

County Canadian Date highwater occurred 9/16/63
Highway number I-40 Name of stream 6 mile Creek
Direction and distance from nearest town, village or store 1/2 mile south
and 3/4 miles east of Jct. US 81 & US 66 south east of El Reno, Okla.

Section, Township and Range SEC. 22, T 12 N, R 7 W.

Description of Location At station 1293+00 SWO 2293 (1)-I-40-Canadian County or
0.82 miles east of US 66 and 0.50 miles south of US 66.

Method obtained Wye Level & Philadelphia Rod. From SWO 2293 (1) Bench Marks

Elevation 1320.30 Source of levels USG & GS

Was highwater mark obtained from actual water, drift, local resident,
U. S. Engineers, etc? Actual water level.

Explanatory Remarks this Creek was not over any Highways, but was out of its banks.

I found it to be 0.20 higher than the notes shown in SWO 2293 (1) Oct. 2, 1959.

The Rain fall was from 3 to 5 inches over a period of 6 hours. This Data has been
recorded in the SWO 2293 (1) Survey notes.

Location to be shown on back of this sheet as a check.

Field Note: To be sent to Engr.
of Plans & Survey (1 copy).
Office Note: To be filed in Flood
Information by Counties.

Arnold R. Lewis
Chief of Party

Oct. 9, 1963

Date

LOC. NO. 7A

R 7 W

R 6 W



T 13 N

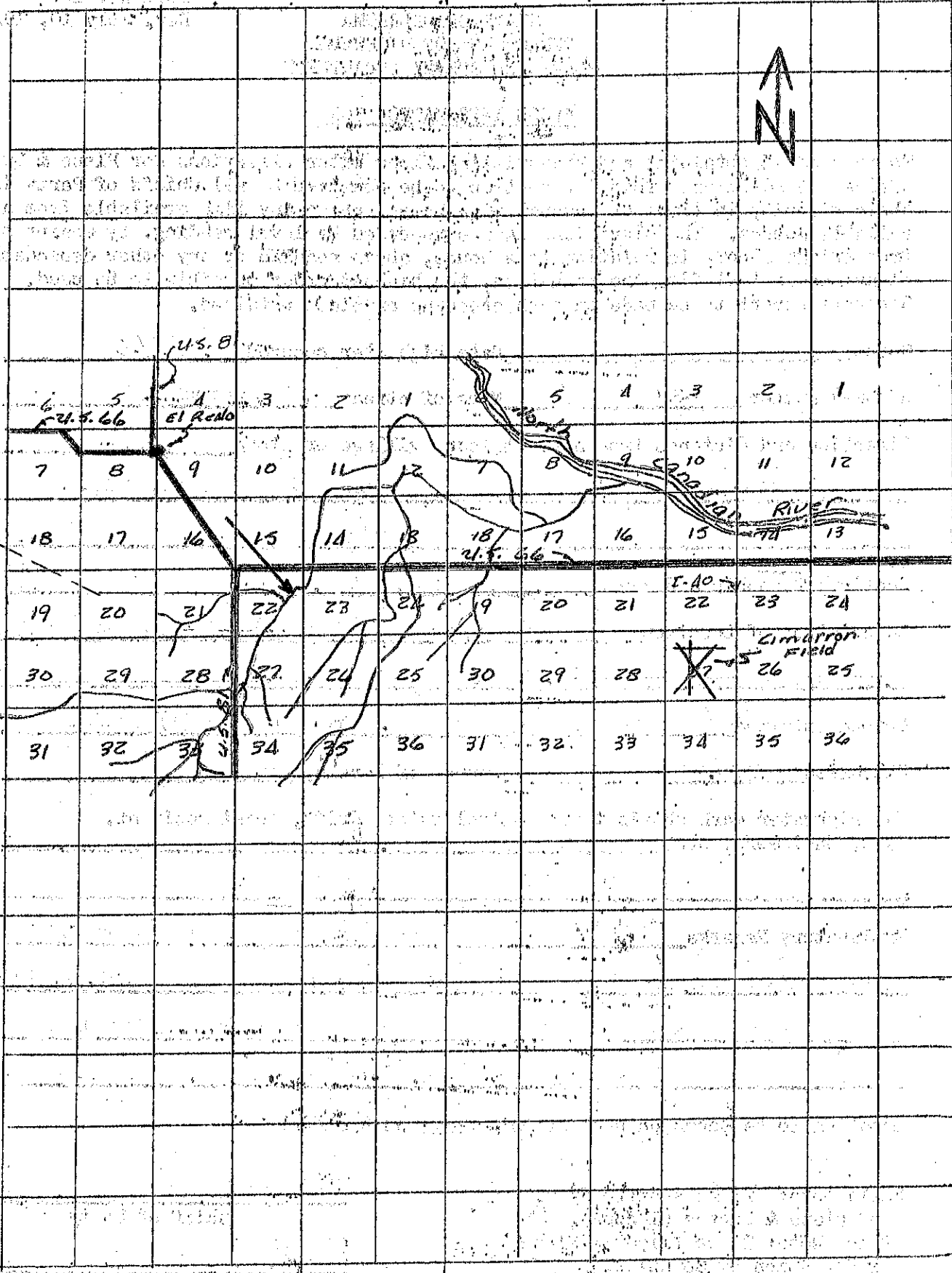
T 13 N

T 12 N

T 12 N

T 11 N

T 11 N



R 7 W

R 6 W