

STATE OF OKLAHOMA
DEPARTMENT OF HIGHWAYS
PLANS AND SURVEY DEPARTMENT

FLOOD INFORMATION FORM

To be used in obtaining and transmitting flood water elevations for Plans & Survey office record files. This information to be obtained by all Chiefs of Party in their vicinity in times of unusual high water, or at any time available from a reliable source. The elevations can be recorded by level reading, by measurement from bridge floor, in relation to a house, above roadbed or any other dependable, clear manner that fits the situation, the highest order possible to be used. Separate report to be made on each crossing or place obtained.

County Canadian Date highwater occurred 9/16/63

Highway number US 81 Name of stream Six mile Creek

Direction and distance from nearest town, village or store 2 miles southe of Jct.
US 66 & US 81 Southeast of El Reno on US 81

Section, Township and Range Between Section 27 & 28, T 12 N, R 7 W on US 81

Description of Location Re-enforced Concrete Bridge Crossing US 81, Steel I-Beams,
Concrete Piling Piers with natural flow Line.

Method obtained Hand Level and Philadelphia Rod. From Bench Marks established on
SWO 2293 (1) Survey

Elevation 5.75 feet lower than Source of levels Bridge floor at south end of Bridge.

Was highwater mark obtained from actual water, drift, local resident,
U. S. Engineers, etc? Actual water Level

Explanatory Remarks This creek did not go over highway US 81, but was out of its
banks. Rainfall in the area was 3 to 5 inches with a 3 inch downpour at one period.

The main purpose of this record is that it might be useful for design purposes on
Six Mile Creek where I-40 crosses it some 1.7 miles down stream.

Location to be shown on back of this sheet as a check.

Field Note: To be sent to Engr.
of Plans & Survey (1 copy).

Office Note: To be filed in Flood
Information by Counties.

Arnold R. Drwin
Chief of Party

Oct 10, 1963
Date

SPRING DIVISION

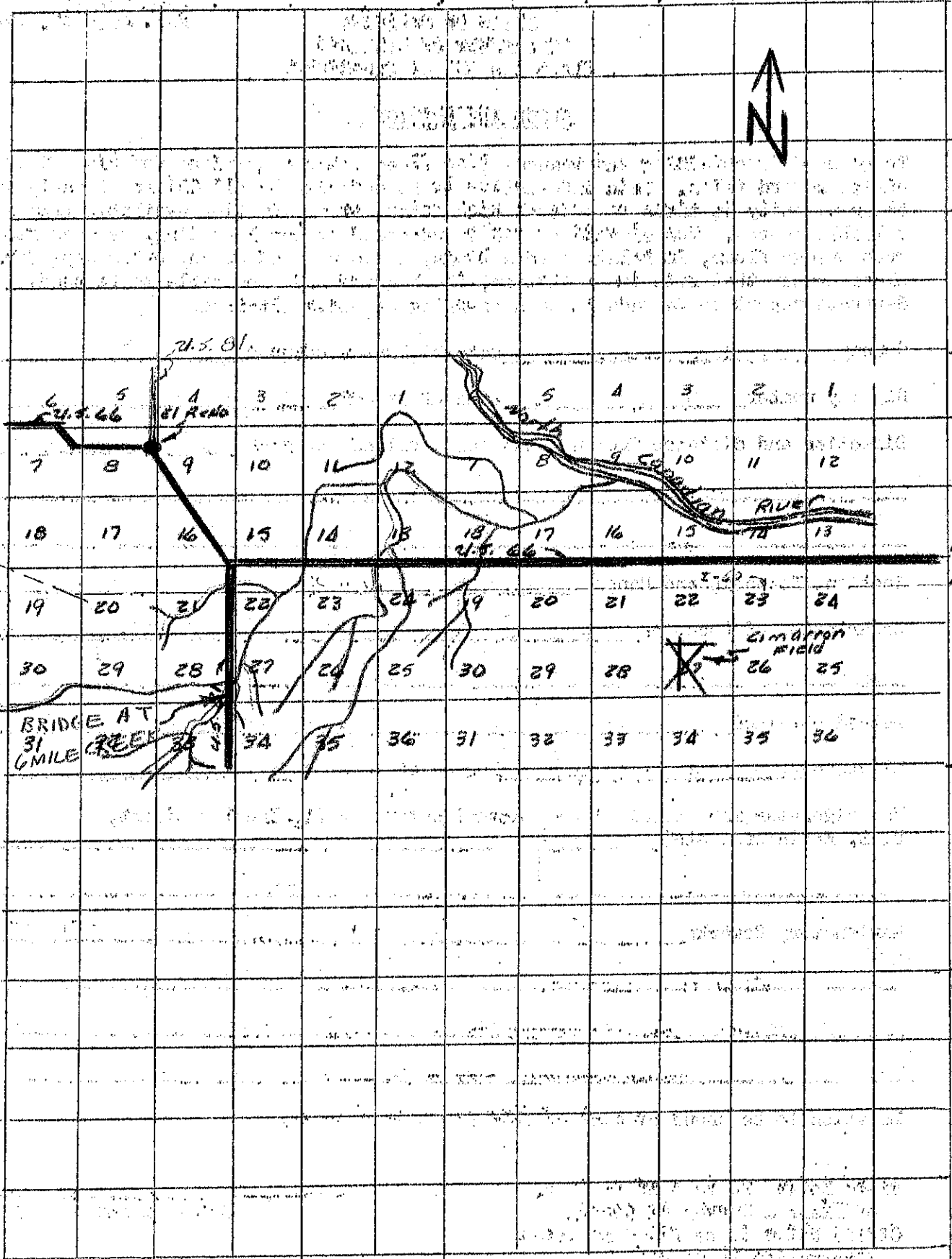
LOC. No. 8

R 7 W

R 6 W

T
13
N

T
13
N



T
12
N

T
12
N

T
11
N

T
11
N

R 7 W

R 6 W