

STATE OF OKLAHOMA
DEPARTMENT OF HIGHWAYS
PLANS AND SURVEY DEPARTMENT

FLOOD INFORMATION FORM

To be used in obtaining and transmitting flood water elevations for Plans & Survey office record files. This information to be obtained by all Chiefs of Party in their vicinity in times of unusual high water, or at any time available from a reliable source. The elevations can be recorded by level reading, by measurement from bridge floor, in relation to a house, above roadbed or any other dependable, clear manner that fits the situation, the highest order possible to be used. Separate report to be made on each crossing or place obtained.

County Canadian Date highwater occurred 9/16/63

Highway number I-40 Name of stream East Fork of Six mile Creek.

Direction and distance from nearest town, village or store 2 miles east and 1/2 mile south of Jet, US 66 & US 81 southeast of El Reno, Okla. On I-40.

Section, Township and Range Sec. 24, T. 12 N., R. 7 W

Description of Location At Station 1357+50 SWO 2293 (1)- I-40-Canadian County

Method obtained Wye Level & Philadelphia Rod from Bench Marks established on SWO 2293(1)

Elevation 1330.50 Source of levels USG & GS

Was highwater mark obtained from actual water, drift, local resident, U. S. Engineers, etc? Actual Water Level

Explanatory Remarks Rain fall in this area was from 3 to 5 inches over a period of about 6 hours. At the time of the extreme high water level a 3 inch downpour came.

This High water information has been recorded in the SWO 2293 (1) Survey Notes.

Location to be shown on back of this sheet as a check.

Field Note: To be sent to Engr. of Plans & Survey (1 copy).
Office Note: To be filed in Flood Information by Counties.

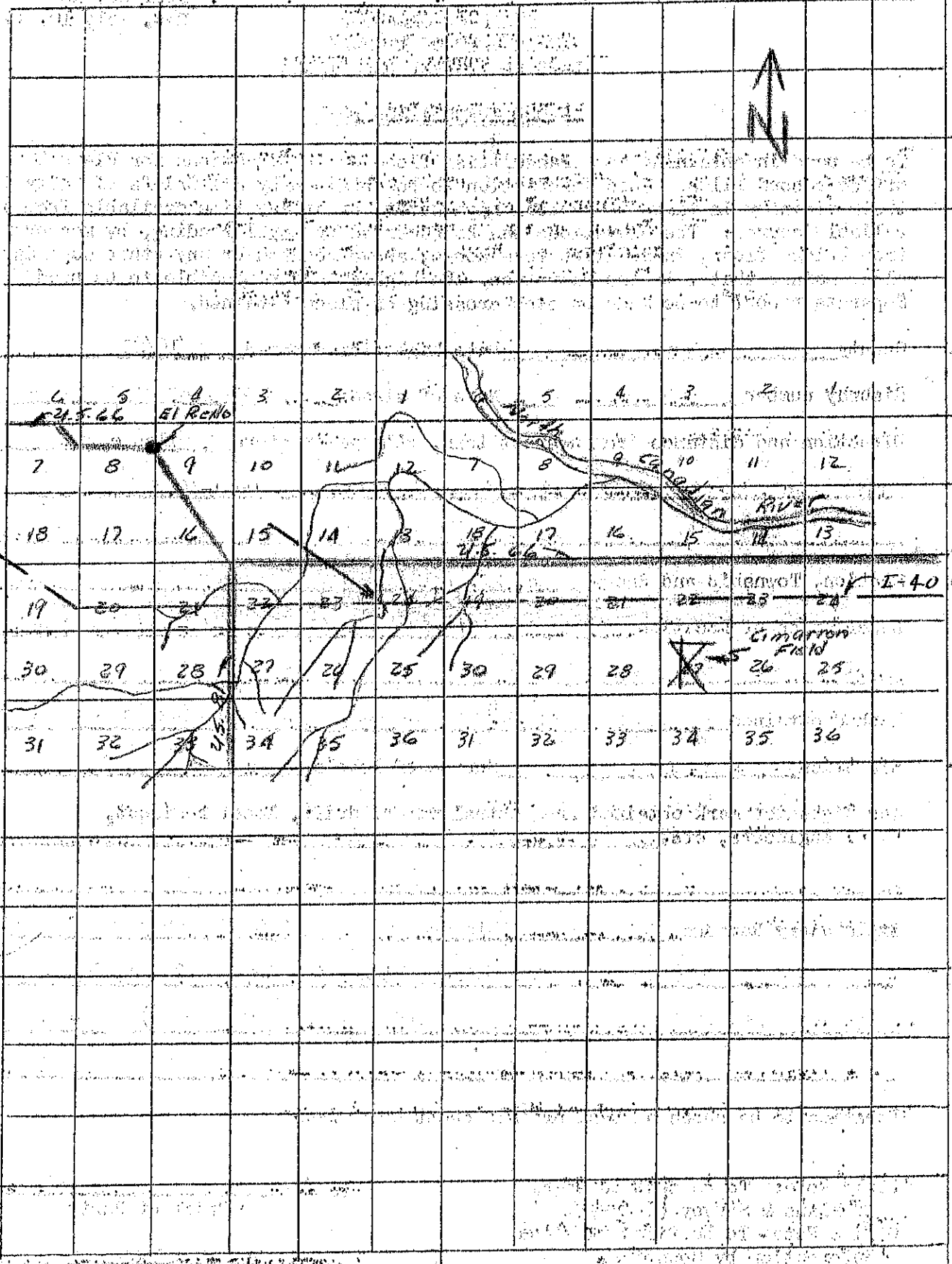
Arnold R. Drwin
Chief of Party
Oct. 10, 1963
Date
LOC. NO. 8

R 7 W

R 6 W

T
13
N

T
13
N



R 7 W

R 6 W

T
11
N

T
11
N