

STATE OF OKLAHOMA  
DEPARTMENT OF HIGHWAYS  
SURVEY DIVISION

FLOOD INFORMATION FORM

To be used in obtaining and transmitting flood water elevations for Survey Division office record files. This information to be obtained by all Chiefs of Party or others in their vicinity in times of unusual high water, or at any time available from a reliable source. The elevations can be recorded by level reading, by measurement from bridge floor, in relation to a house, above roadbed or any other dependable, clear manner that fits the situation, the highest order possible to be used. Separate report to be made on each crossing or place obtained.

County Canadian Date highwater occurred 9/17/65

Highway number U.S. 270 Name of stream Six Mile Creek

Direction and distance from nearest town, village or store 2 miles South of Calumet  
on U.S. 270

Section, Township and Range Section 25, R9W, T13N

Description of Location Bridge over Six Mile Creek, 2 miles south of Calumet on U.S. 270

Elevation "See remarks" Source of levels \_\_\_\_\_

Method obtained with wye level & Philadelphia rod Date obtained 9/29/65

Did it appear to be  normal  medium  extreme  do not know

Was highwater mark obtained from actual water, drift, local resident, U. S. Engineers, etc.? Drift on bridge

Explanatory Remarks Highwater was 1.5 ft. over  $\frac{1}{2}$  bridge floor at north end of bridge. Highwater was caused from a reported rain of approx 12 inches in about 12 hours. It was reported by area residents and Highway Dept. maint. crews that the water was the highest since the present pavement was built. The water washed out the road shoulder on the downstream side for approx.  $\frac{1}{4}$  mile north of the bridge. This information was obtained by A. W. Ziegelgruber and B. D. Roden.

Location to be shown on back of this sheet as a check.

Field Note: To be sent to  
Survey Engineer

A. W. Ziegelgruber  
~~CHIEF OF PARTY~~ Chief of Party  
~~LOCATION ENGINEER~~  
December 20, 1965  
Date

*Mc*  
#  
LOC. 10

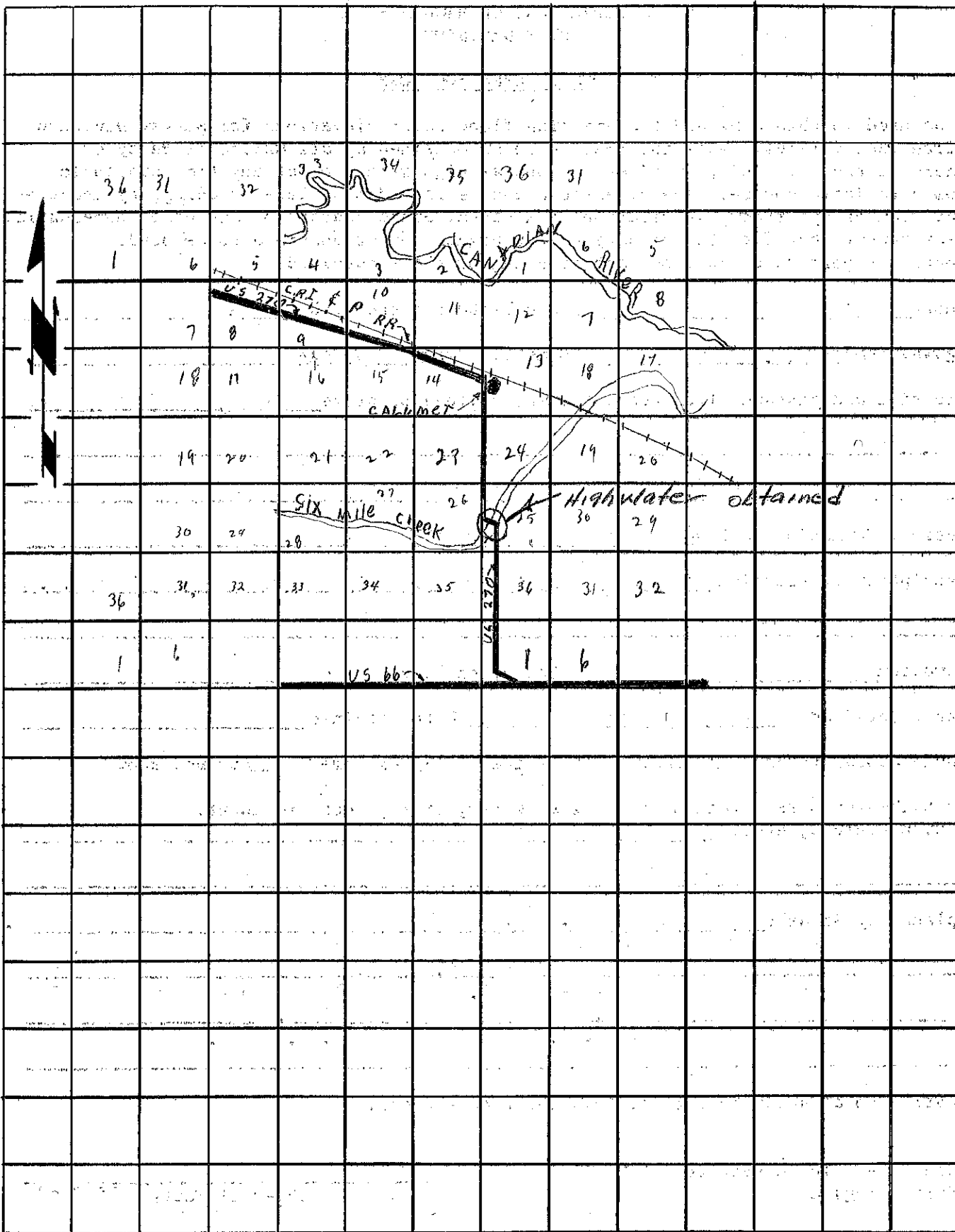
R 10 W

R 9 W

R 8 W

T 14 N

T 14 N



T 13 N

T 13 N

T 12 N

T 12 N