

STATE OF OKLAHOMA  
DEPARTMENT OF HIGHWAYS  
PLANS AND SURVEY DEPARTMENT

FLOOD INFORMATION FORM

To be used in obtaining and transmitting flood water elevations for Plans & Survey office record files. This information to be obtained by all Chiefs of Party in their vicinity in times of unusual high water, or at any time available from a reliable source. The elevations can be recorded by level reading, by measurement from bridge floor, in relation to a house, above roadbed or any other dependable, clear manner that fits the situation, the highest order possible to be used. Separate report to be made on each crossing or place obtained.

County Caddo Date highwater occurred May 17, 1949

Highway number SH 58 Name of stream Washita River

Direction and distance from nearest town, village or store at the north  
edge of Carnegie on SH 58

Section, Township and Range between Sec 5 & 6 T7N R13W

Description of Location at the Washita River bridge built as NRS 409-A in 1936

Method obtained by measurement with a rule

Elevation 1.2 below bridge Source of levels abutment seat

Was highwater mark obtained from actual water, drift, local resident,  
U. S. Engineers, etc? very definite water mark on concrete abutment

Explanatory Remarks This is not known to be an extreme highwater mark but  
was caused by an 8" rain which was reputed to be the most rain since 1903. This

information was obtained by Gaines H. Stout and Div. Engr. Ray Stanley on May 19, 1949.

The roadbed was overflowed about one foot deep south of the bridge.

Location to be shown on back of this sheet as a check.

Field Note: To be sent to Engr.  
of Plans & Survey (1 copy).

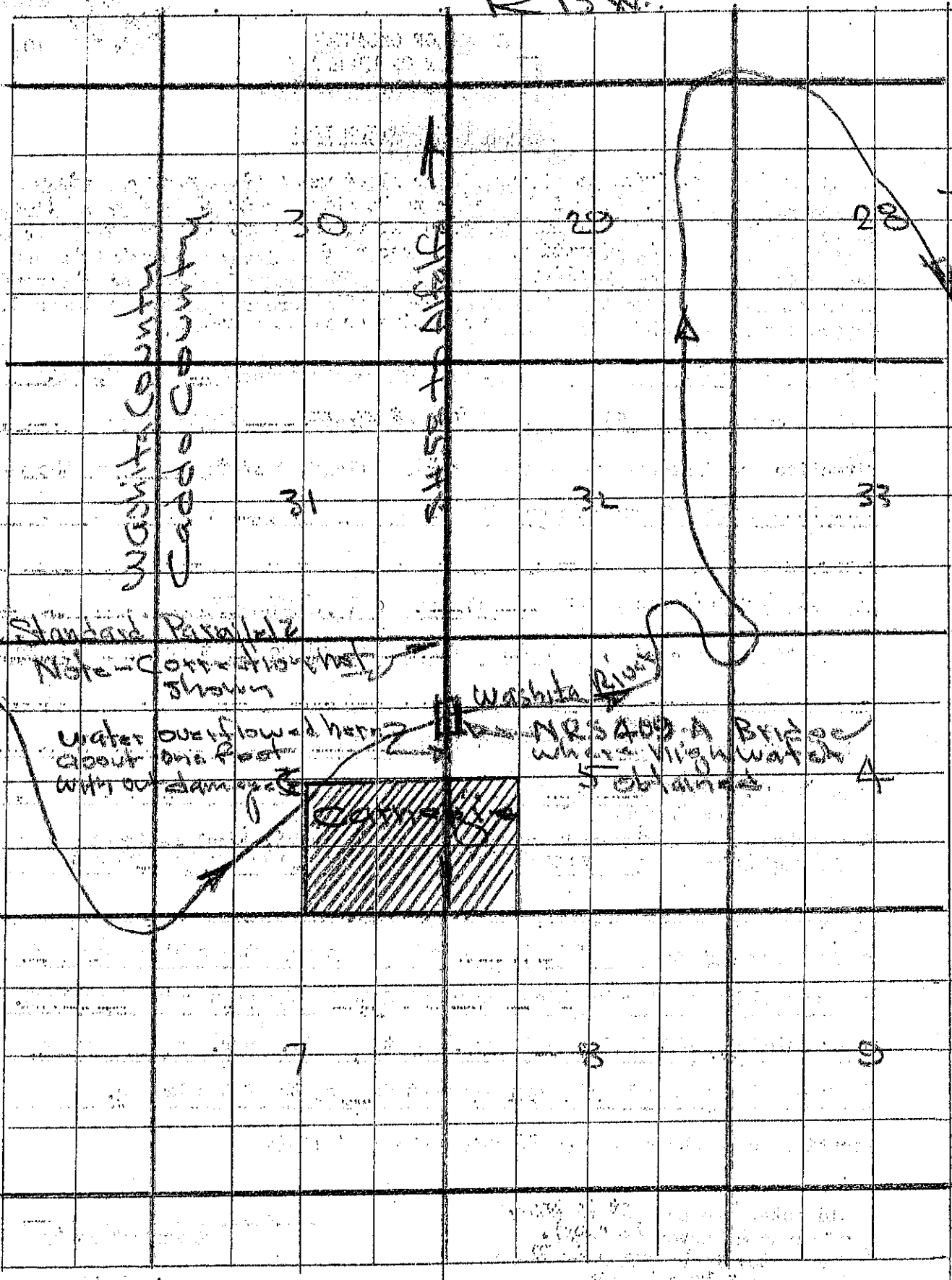
Office Note: To be filed in Flood  
Information by Counties.

Gaines H. Stout  
Chief of Party

May 26, 1949  
Date

LOC. No. 2

R 13 W.



Washita County  
Caddo County

Caddo County

Standard Parallel  
Note - Correction not shown

Water overflowed here about one foot with no damage

Washita River

MRS 409 A Bridge where high water obtained

Caddo County



T 28 N

T 27 N

30

29

28

31

32

33

7

8

9