



OKLAHOMA DEPARTMENT OF TRANSPORTATION
SURVEY DIVISION

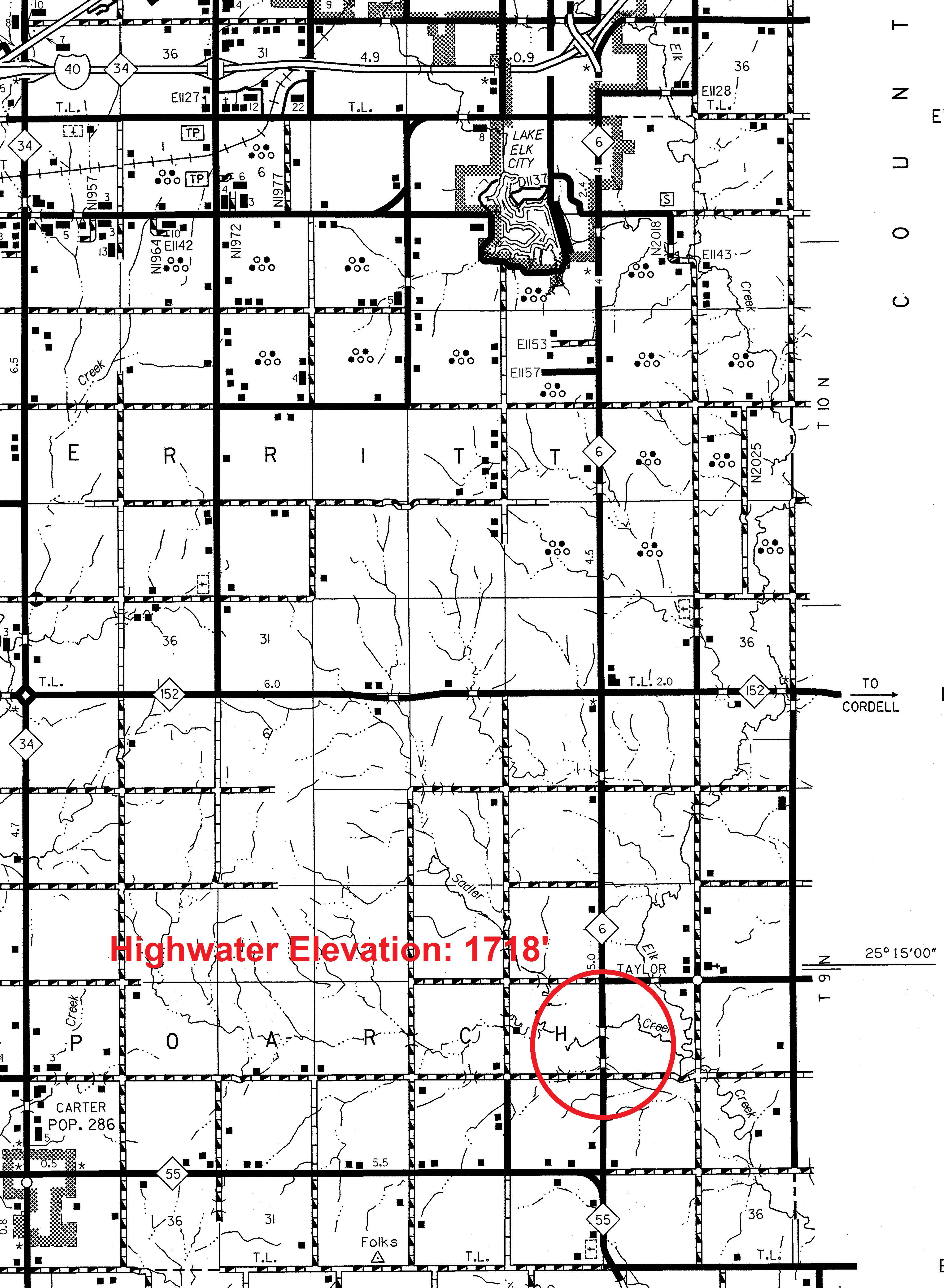
FLOOD INFORMATION FORM

Division #:	1 <input type="checkbox"/> 2 <input type="checkbox"/> 3 <input type="checkbox"/> 4 <input type="checkbox"/> 5 <input checked="" type="checkbox"/> 6 <input type="checkbox"/> 7 <input type="checkbox"/> 8 <input type="checkbox"/>
County:	Beckham
Date Highwater occurred:	5/10/2019
Highway Number:	S.H. 6
Name of Stream:	N/A
Direction and distance from nearest town, or highway junction	Approx. 1.1 Miles North of S.H. 6 And S.H. 55 Junction.
Section, Township, Range:	Section 22 T 9 N , R 21 W
Description of Location:	Pasture With Grass Lined Bar Ditches.
Latitude	35^14'03" N
Longitude	99^23'59" W
Highwater Elevation:	1718' or Approximately 1.5' over the road.
Level Datum & Source:	NAVD88 (Computed using GEOID12B)
Method used:	RTK GPS
Date Elevation Obtained:	5/13/2019
Apparent Magnitude:	Normal <input type="checkbox"/> Medium <input checked="" type="checkbox"/> Extreme <input type="checkbox"/> Unknown <input type="checkbox"/>
Was Highwater Mark obtained from actual water, drift, local resident, or other source?	Highwater was Verified by Beckham County ODOT Yard Crew.
Explanatory Remarks:	Approx. 3" of rain occurred overnight in the upstream area of this location.

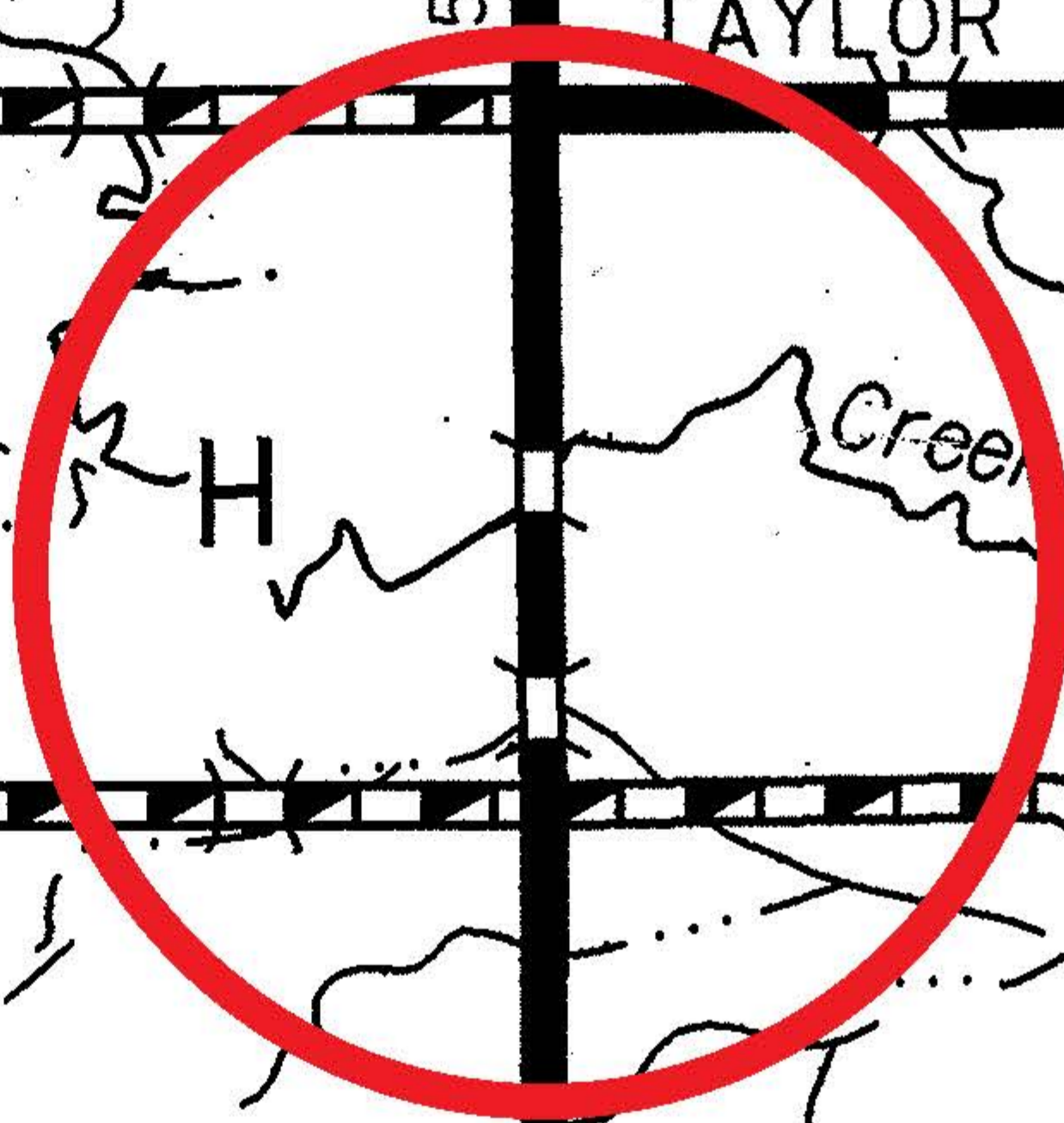
Name (Signature) _____

Name (Printed) Lawton Crew

Date 5/14/2019



Highwater Elevation: 1718'



T 10 N

T 9 N

25° 15'00"

TO
CORDELL

40

34

34

152

152

6

6

55

55

T.L.

T.L.

T.L.

T.L.

T.L.

CARTER
POP. 286

Folks

T.L.

T.L.

LAKE
ELK
CITY

EIK
TAYLOR

Creek

Sadler

Creek

Creek

Creek

E

R

R

I

T

T

36

31

36

36

31

36

NI964
EI142

NI972

NI977

N2018

EI143

EI153
EI157

EI127

EI128

EI137

TP

TP

S

NI964
EI142

NI972

NI977

N2018

EI143

EI153
EI157

EI127

EI128

EI137

TP

TP

S

NI964
EI142

NI972

NI977

N2018

EI143

EI153
EI157

EI127

EI128

EI137

TP

TP

S

NI964
EI142

NI972

NI977

N2018

EI143

EI153
EI157

EI127

EI128

EI137

TP

TP

S

NI964
EI142

NI972

NI977

N2018

EI143

EI153
EI157

EI127

EI128

EI137

TP

TP

S

NI964
EI142

NI972

NI977

N2018

EI143

EI153
EI157

EI127

EI128

EI137

TP

TP

S

NI964
EI142

NI972

NI977

N2018

EI143

EI153
EI157

EI127

EI128

EI137

TP

TP

S

NI964
EI142

NI972

NI977

N2018

EI143

EI153
EI157

EI127

EI128

EI137

TP

TP

S

NI964
EI142

NI972

NI977

N2018

EI143

EI153
EI157

EI127

EI128

EI137

TP

TP

S

NI964
EI142

NI972

NI977

N2018

EI143

EI153
EI157

EI127

EI128

EI137

TP

TP

S

NI964
EI142

NI972

NI977

N2018

EI143

EI153
EI157

EI127

EI128

EI137

TP

TP

S

NI964
EI142

NI972

NI977

N2018

EI143

EI153
EI157

EI127

EI128

EI137

TP

TP

S

NI964
EI142

NI972

NI977

N2018

EI143

EI153
EI157

EI127

EI128

EI137

TP

TP

S

NI964
EI142

NI972

NI977

N2018

EI143

EI153
EI157

EI127

EI128

EI137

TP

TP

S

NI964
EI142

NI972

NI977

N2018

EI143

EI153
EI157

EI127

EI128

EI137

TP

TP

S

NI964
EI142

NI972

NI977

N2018

EI143

EI153
EI157

EI127

EI128

EI137

TP

TP

S

NI964
EI142

NI972

NI977

N2018

EI143

EI153
EI157

EI127

EI128

EI137

TP

TP

S

NI964
EI142

NI972

NI977

N2018

EI143

EI153
EI157

EI127

EI128

EI137

TP

TP

S

NI964
EI142

NI972

NI977

N2018

EI143

EI153
EI157

EI127

EI128

EI137

TP

TP

S

NI964
EI142

NI972

NI977

N2018

EI143

EI153
EI157

EI127

EI128

EI137

TP

TP

S

NI964
EI142

NI972

NI977

N2018

EI143

EI153
EI157

EI127

EI128

EI137

TP

TP

S

NI964
EI142

NI972

NI977

N2018

EI143

EI153
EI157

EI127

EI128

EI137

TP

TP

S

NI964
EI142

NI972

NI977

N2018

EI143

EI153
EI157

EI127

EI128

EI137

TP