

STATE OF OKLAHOMA  
DEPARTMENT OF HIGHWAYS  
SURVEY DIVISION

FLOOD INFORMATION FORM

To be used in obtaining and transmitting flood water elevations for Survey Division office record files. This information to be obtained by all Chiefs of Party or others in their vicinity in times of unusual high water, or at any time available from a reliable source. The elevations can be recorded by level reading, by measurement from bridge floor, in relation to a house, above roadbed or any other dependable, clear manner that fits the situation, the highest order possible to be used. Separate report to be made on each crossing or place obtained.

County Alfalfa Date highwater occurred June 23, 1963  
Highway number US 64 Name of stream West Clay Creek  
Direction and distance from nearest town, village or store 5 miles South of  
Cherokee, Oklahoma on US 64.

Section, Township and Range Sec 35 T26N R11W

Description of Location at the bridge across west clay creek on US 64-5 miles South  
of Cherokee, Oklahoma.

Elevation 1201.92 Source of levels USO&GS

Method obtained Wye Level Date obtained June 24, 1963

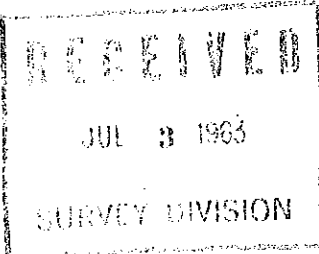
Did it appear to be  normal  medium  extreme  do not know

Was highwater mark obtained from actual water, drift, local resident,  
U. S. Engineers, etc.? from drift on the low steel of the bridge across West Clay  
Creek and from drift and silt on the shoulders of US 64  
about 30 Ft. south of the south end of the bridge. Also  
obtained from Harry Pollock Co. Foreman Alfalfa Co.-Cherokee

Explanatory Remarks From drift and silt on the bridge, and from water marks on  
the wingwalls of the bridge the water had reached the floor  
floor of the present bridge across West Clay Creek.  
This highwater was caused by a reported 9-12 inch rain that  
fell in a Six hour period.

Location to be shown on back of this sheet as a check.

Field Note: To be sent to  
Survey Engineer

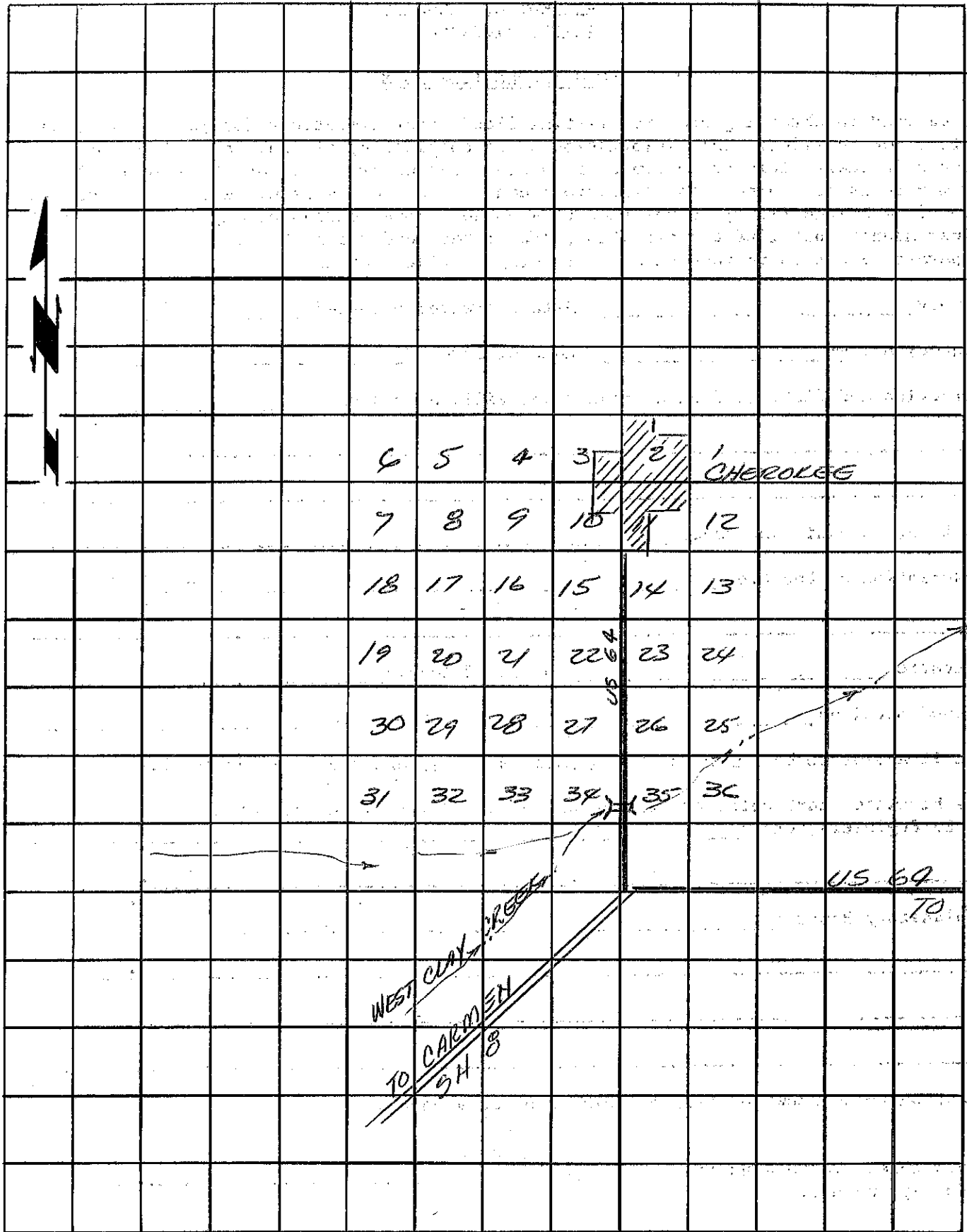


James Berry  
Chief of Party

June 29, 1963  
Date

LOC. #5

R11W.



T  
26  
N

WEST CLAY  
TO CARMEN  
SH 8

US 69  
TO JET