

STATE OF OKLAHOMA
DEPARTMENT OF HIGHWAYS
SURVEY DIVISION

FLOOD INFORMATION FORM

To be used in obtaining and transmitting flood water elevations for Survey Division office record files. This information to be obtained by all Chiefs of Party or others in their vicinity in times of unusual high water, or at any time available from a reliable source. The elevations can be recorded by level reading, by measurement from bridge floor, in relation to a house, above roadbed or any other dependable, clear manner that fits the situation, the highest order possible to be used. Separate report to be made on each crossing or place obtained.

County Adair Date highwater occurred October 1, 1986

Highway number US 62 Name of stream Dennison Hollow Creek

Direction and distance from nearest town, village or store Approx. 2.5 miles west along US 62 from the school house at Christie, Oklahoma.

Section, Township and Range Section 13, T17N, R24 East

Description of Location Highwater obtained at the bridge over US 62 Sta. 818+20 on SAP 250 SH 27 Plans

Elevation 797.2 Source of levels SAP 250 SH 27 Plans

Method obtained Fennel Level Date obtained _____

Did it appear to be normal medium extreme do not know

Was highwater mark obtained from actual water, drift, local resident, U. S. Engineers, etc.? Obtained from drifts and residue after 15" rain.

Explanatory Remarks Highwater mark was 0.3 above the top of the northeast headwall of the existing bridge.

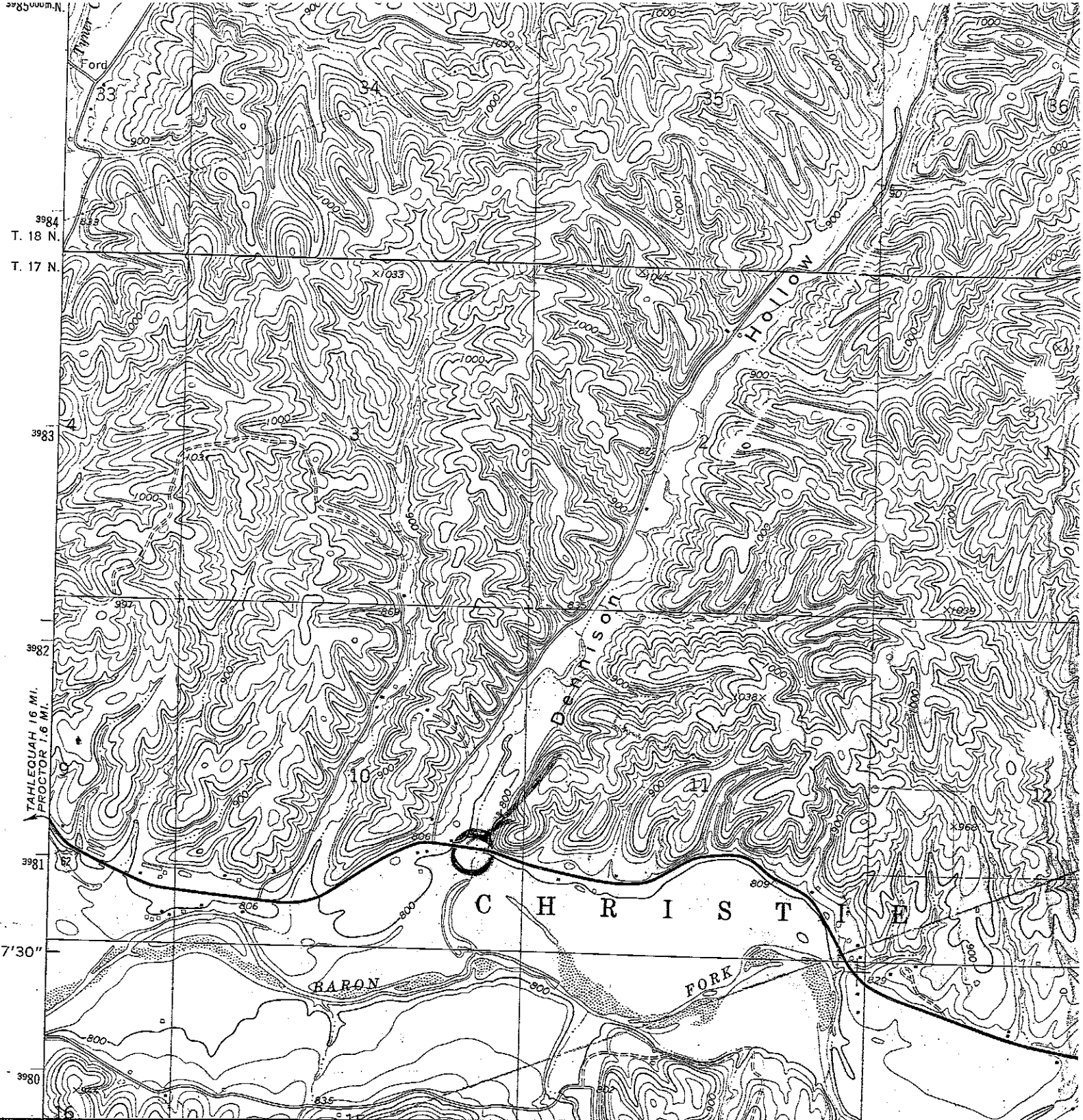
Location to be shown on back of this sheet as a check.

Field Note: To be sent to
Survey Engineer

James Wayne Rogers
Location Engineer

October 9, 1986
Date

LOCATION No. 7



TAHLEQUAH 16 MI.
PROCTOR 7.6 MI.

57°30''

3980

3984

3983

3982

3981

CHRISTIE

BARON

FORK

Ford

33

34

36

X1033

X1032

X1031

X1030

32

31

30

29

28

27

26

25

24

23

35

34

33

32

31

30

29

28

27

36

35

34

33

32

31

30

29

28

37

36

35

34

33

32

31

30

29

38

37

36

35

34

33

32

31

30

39

38

37

36

35

34

33

32

31

40

39

38

37

36

35

34

33

32

41

40

39

38

37

36

35

34

33

42

41

40

39

38

37

36

35

34

43

42

41

40

39

38

37

36

35

44

43

42

41

40

39

38

37

36

45

44

43

42

41

40

39

38

37

46

45

44

43

42

41

40

39

38

47

46

45

44

43

42

41

40

39

48

47

46

45

44

43

42

41

40

49

48

47

46

45

44

43

42

41

50

49

48

47

46

45

44

43

42

51

50

49

48

47

46

45

44

43

52

51

50

49

48

47

46

45

44

53

52

51

50

49

48

47

46

45

54

53

52

51

50

49

48

47

46

55

54

53

52

51

50

49

48

47

56

55

54

53

52

51

50

49

48

57

56

55

54

53

52

51

50

49

58

57

56

55

54

53

52

51

50

59

58

57

56

55

54

53

52

51

60

59

58

57

56

55

54

53

52

61

60

59

58

57

56

55

54

53

62

61

60

59

58

57

56

55

54

63

62

61

60

59

58

57

56

55

64

63

62

61

60

59

58

57

56

65

64

63

62

61

60

59

58

57

66

65

64

63

62

61

60

59

58

67

66

65

64

63

62

61

60

59

68

67

66

65

64

63

62

61

60

69

68