

# CHANGES IN TERRESTRIAL SOIL LOSS IN THE MIDDLE RIO GRANDE BASIN TO 2100

2019 MRGESCP Science Symposium, December 2019

A.O. Pinson

U.S. Army Corps of Engineers, Albuquerque District

*"The views, opinions and findings contained in this report are those of the authors(s) and should not be construed as an official Department of the Army position, policy or decision, unless so designated by other official documentation."*



US Army Corps  
of Engineers®









# REVISED UNIVERSAL SOIL LOSS EQUATION (RUSLE)

$$A = R * C * K * SL * P$$

Multiple  
scenarios

- A: Soil loss -  $t \text{ ha}^{-1} \text{ year}^{-1}$
- R: Erosivity -  $\text{MJ mm ha}^{-1} \text{ h}^{-1} \text{ year}^{-1}$  –  
CMIP5-LOCA Precipitation
- C: Cover factor – unitless –  
USGS Land Carbon LULC Modeled Data

Constant,  
may amplify

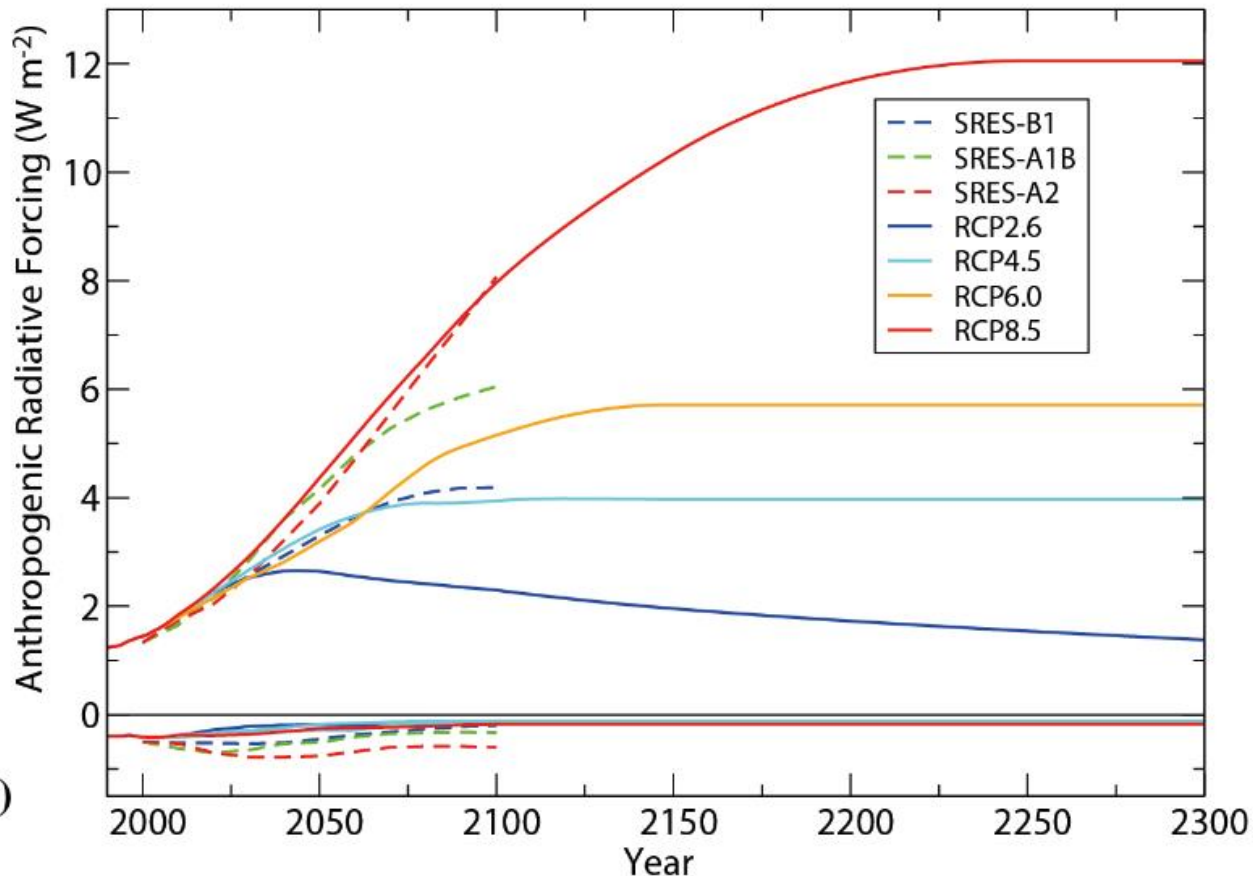
- K: USDA soil K factor -  $t \text{ ha h ha}^{-1} \text{ MJ}^{-1} \text{ mm}^{-1}$
- SL: Slope (S) and Slope Length (L) - unitless
- P: Erosion control, set to 1 - unitless



US Army Corps  
of Engineers<sup>®</sup>



# NB: FUTURE CONDITIONS DATA



Precipitation (CMIP5)

- RCP 8.5
- RCP 4.5

Land Cover (CMIP3)

- SRES A2
- SRES B1

Mix not ideal

Best match of data available

*Collins et al. 2013 (IPCC AR5 report)*



|               | Lower Scenario       | Higher Scenario      |
|---------------|----------------------|----------------------|
| Precipitation | RCP4.5 Ensemble Mean | RCP8.5 Ensemble Mean |
| Land Cover    | SRES B1              | SRES A2              |

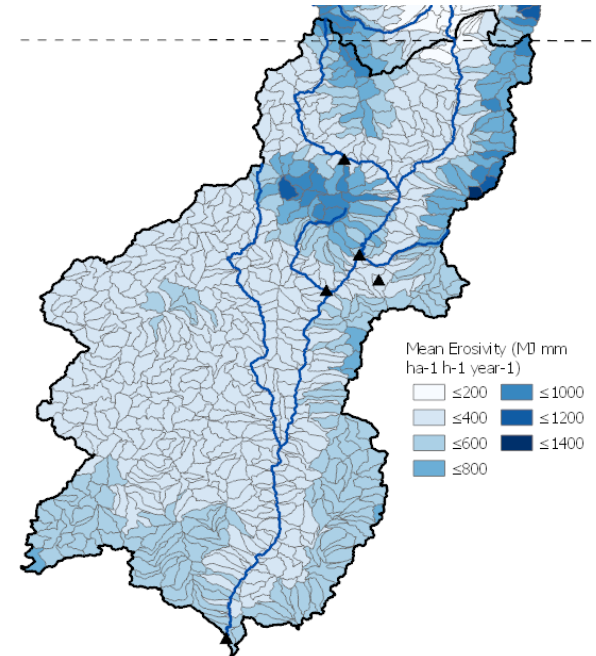
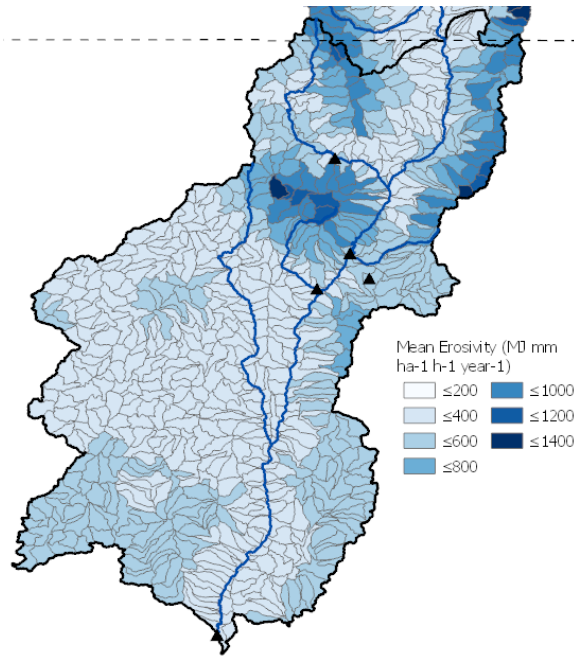
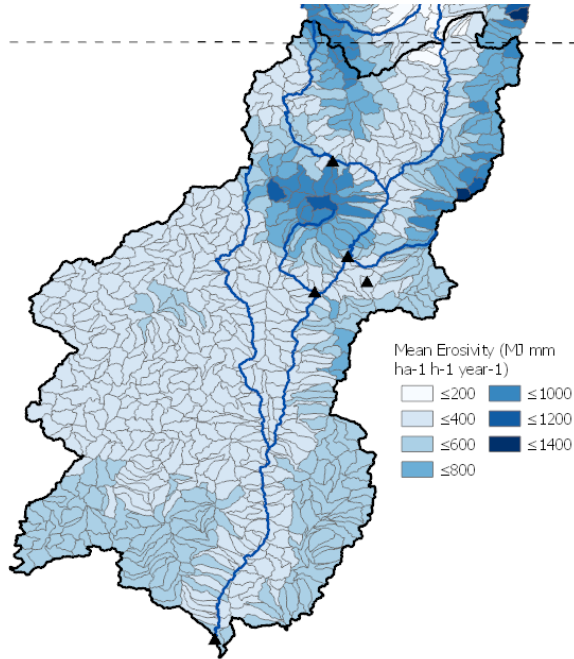


# EROSIVITY (R) CHANGE

## Modeled Historic

## Lower Emissions

## Higher Emissions



- Precipitation, therefore erosivity, **controlled by orography**
- **Lower emissions** – small increase in erosivity in mountains
- **Higher emissions** – small decrease in erosivity in mountains, slight increase in lower elevations south



US Army Corps  
of Engineers<sup>®</sup>

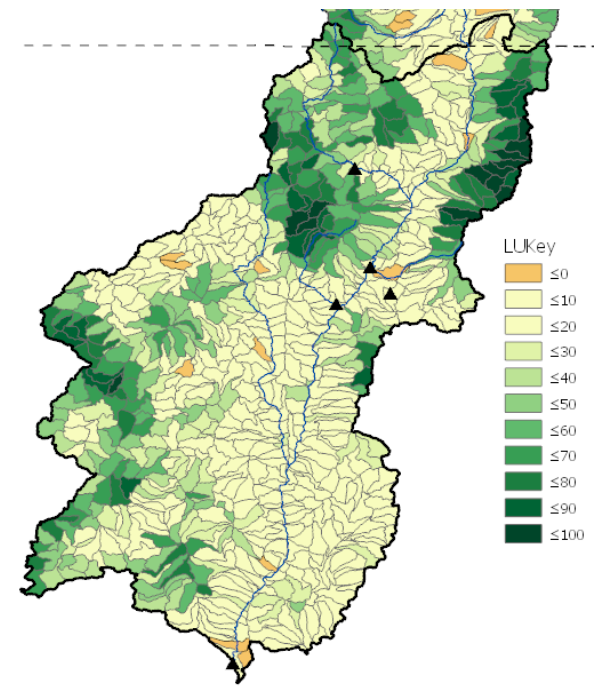
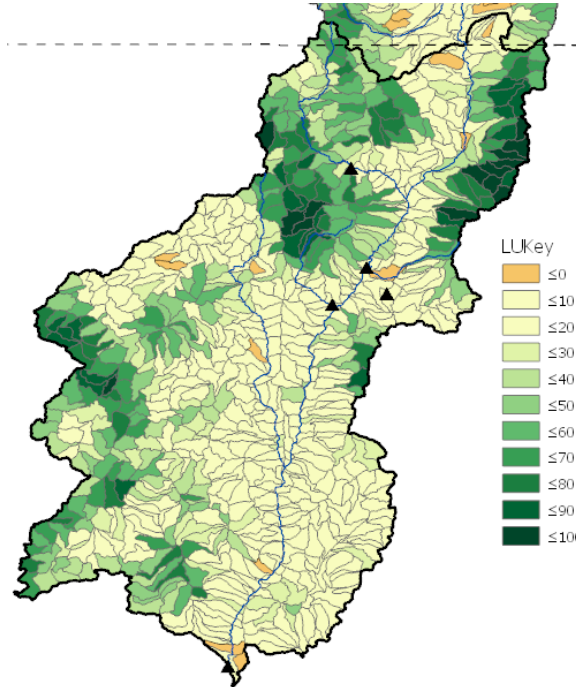
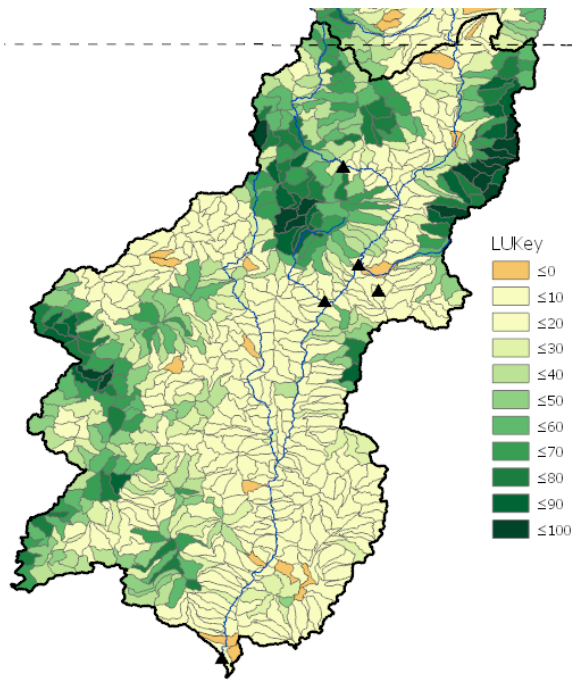


# LAND COVER (C) CHANGE – PERCENT FOREST

## Modeled Historic

## Lower Emissions

## Higher Emissions



- Forest includes Coniferous, Deciduous, and Mixed Forest types
- **No significant change in forested area over time either scenario**

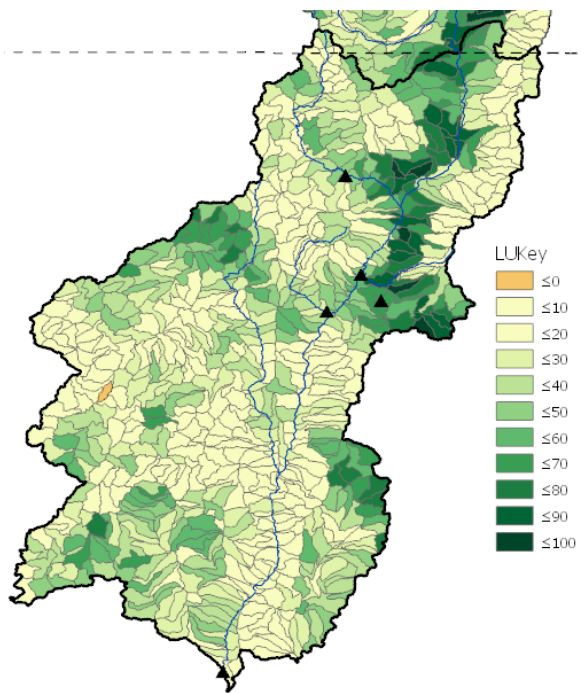
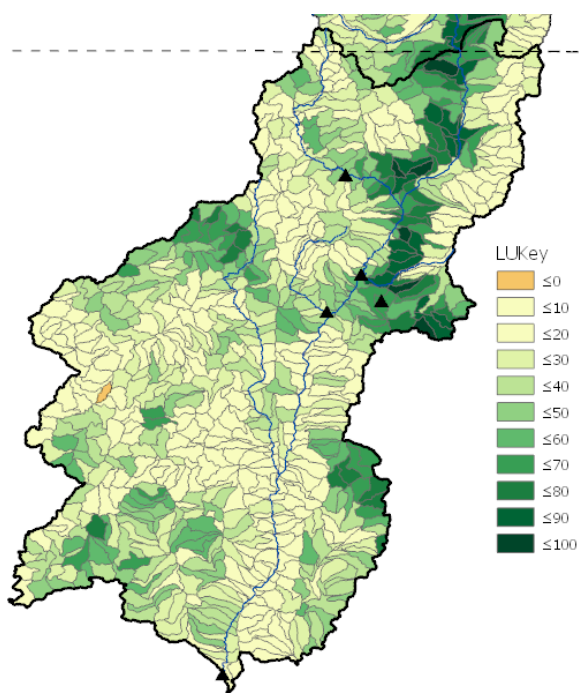
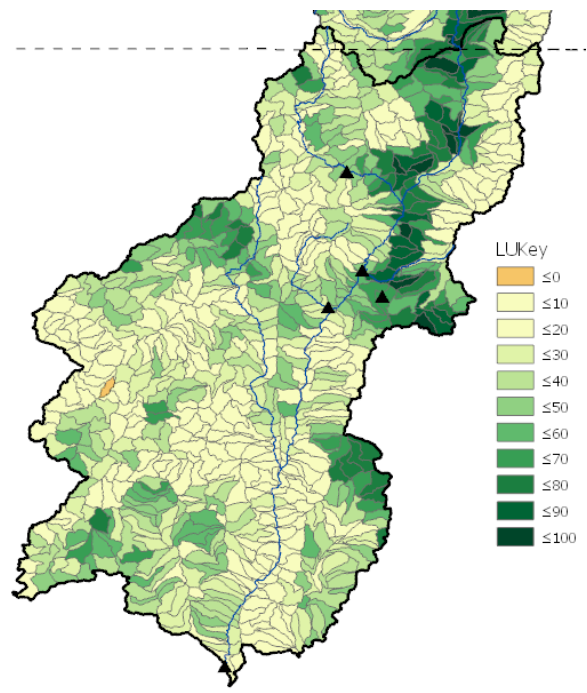


# LAND COVER (C) CHANGE – PERCENT GRASS-SHRUB

## Modeled Historic

## Lower Emissions

## Higher Emissions



- No significant change in percent of watershed in grassland and shrubland

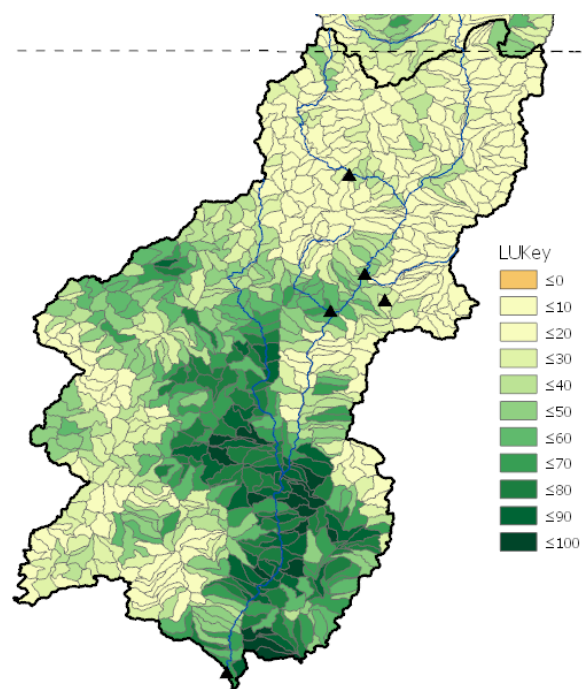
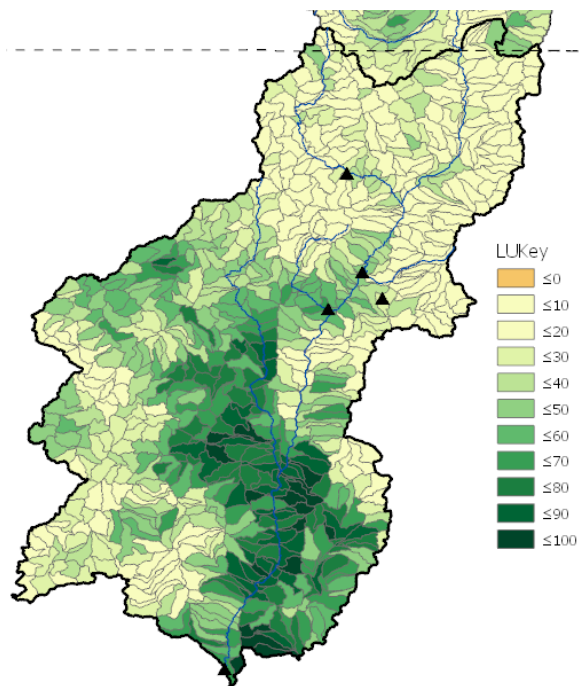
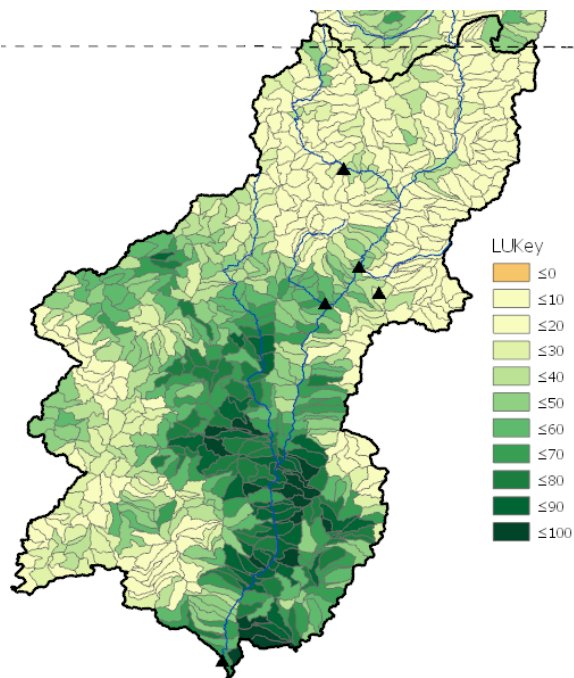


# LAND COVER (C) CHANGE – PERCENT AGRICULTURAL

## Modeled Historic

## Lower Emissions

## Higher Emissions



- No significant change in percent of watershed in cropland and pasture land

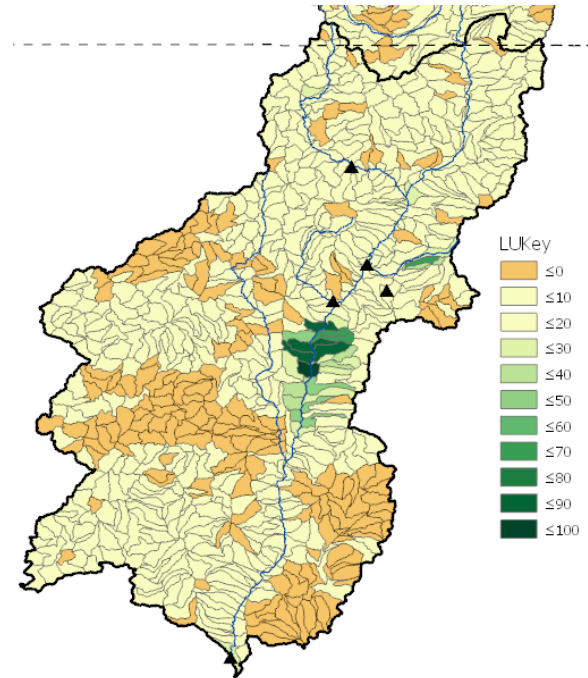
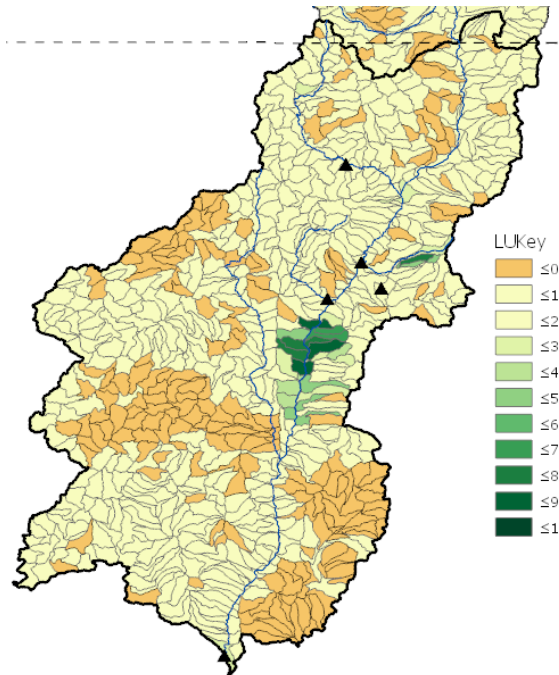
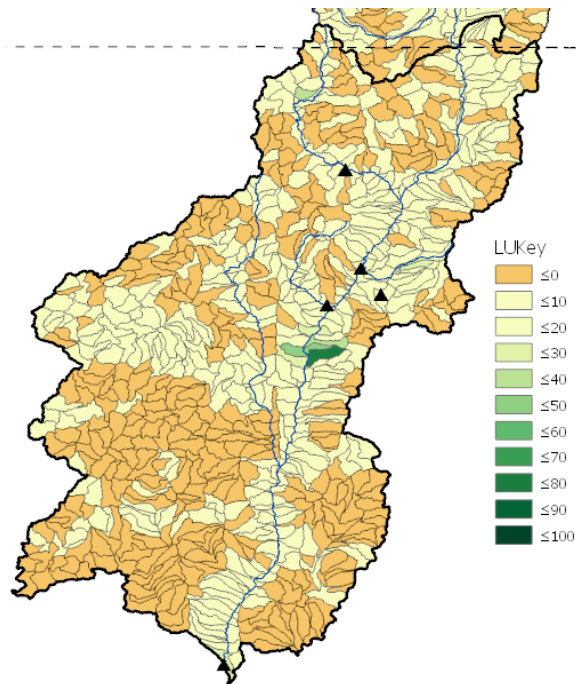


# LAND COVER (C) CHANGE – PERCENT DISTURBED OR BARREN

## Modeled Historic

## Lower Emissions

## Higher Emissions



- Orange = 0
- Slight increases in disturbance across most watersheds (mining, logging, development)
- Continued development in the Albuquerque area and Belen/Los Lunas areas, and Santa Fe

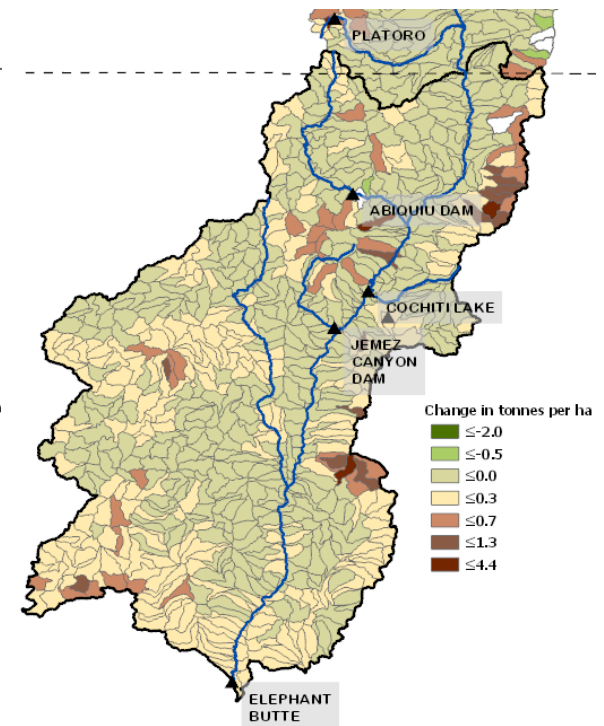
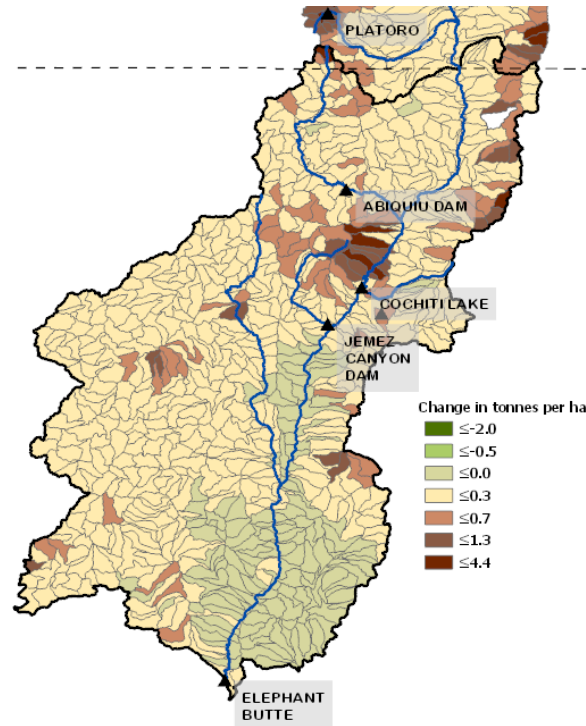
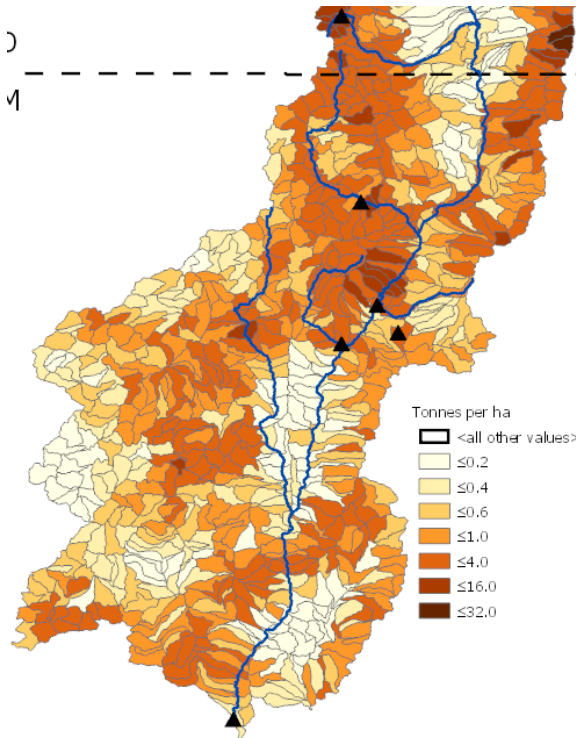


# CHANGE IN SOIL LOSS RATES - TOTAL

## Modeled Historic

## Lower Emissions

## Higher Emissions



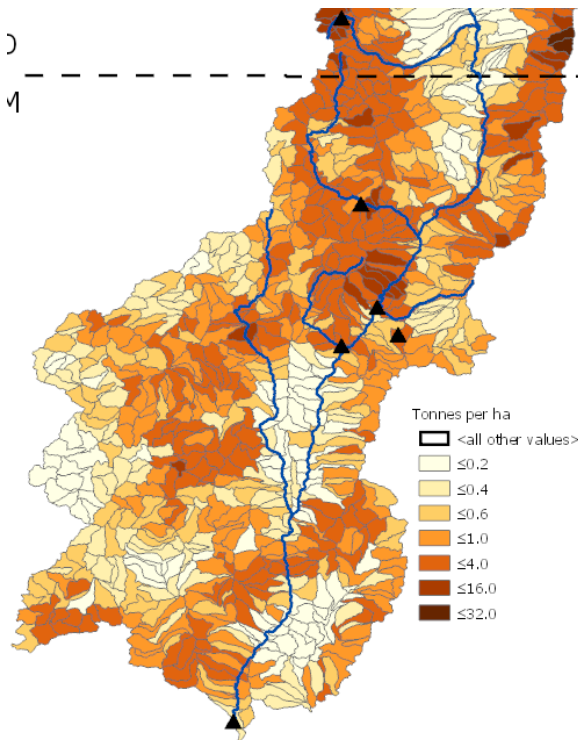
- Reductions in low elevation soil loss rates over time in both scenarios
  - Greater reductions under higher emissions
- Increases occur in steep, mountainous terrain



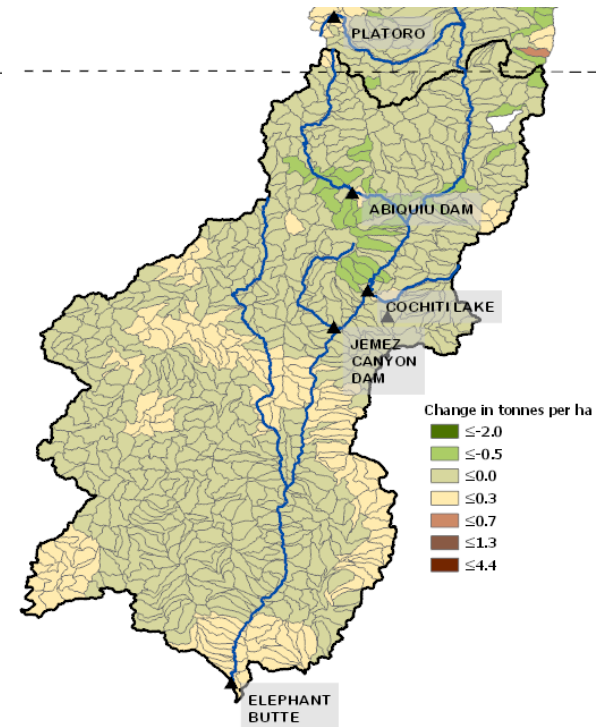
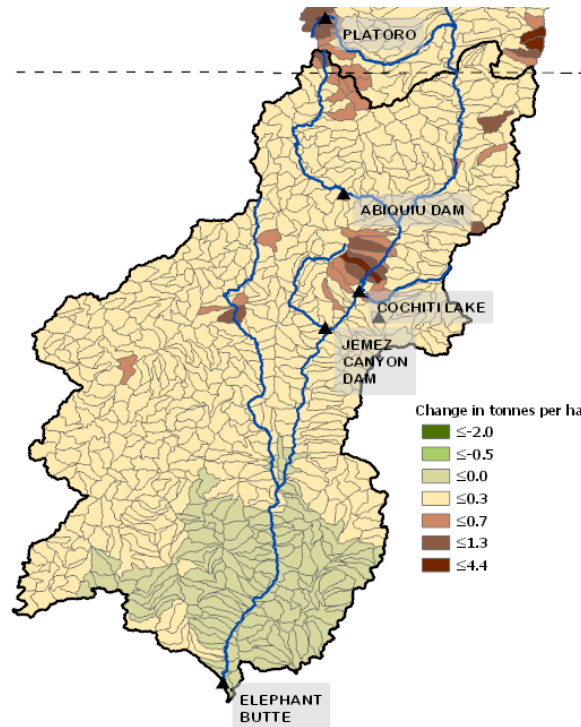


# CHANGE IN SOIL LOSS RATES – DUE TO EROSIVITY

## Modeled Historic



## Lower Emissions Higher Emissions



- Orange = 0
- Overall picture is one of reductions in soil loss due to erosivity
  - Some increases in high elevation areas under lower scenario

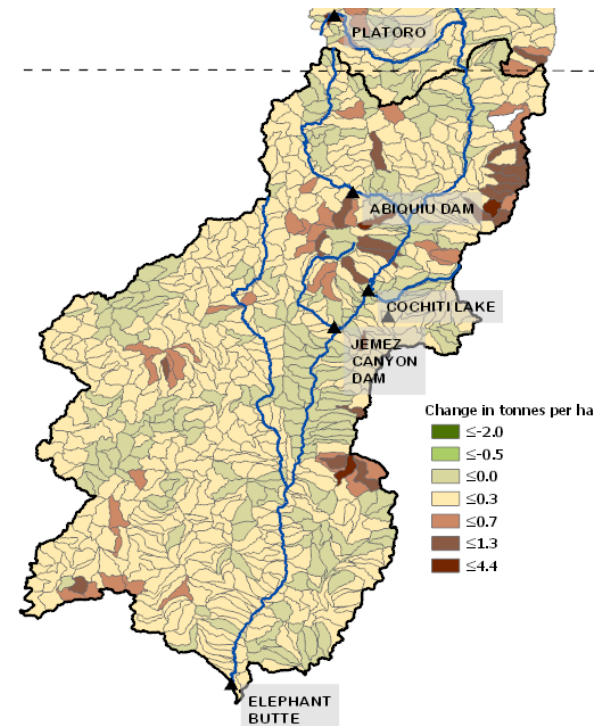
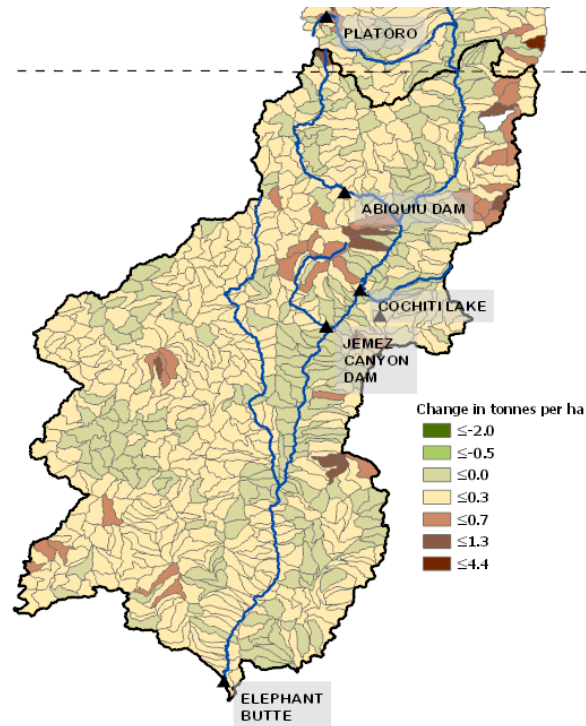
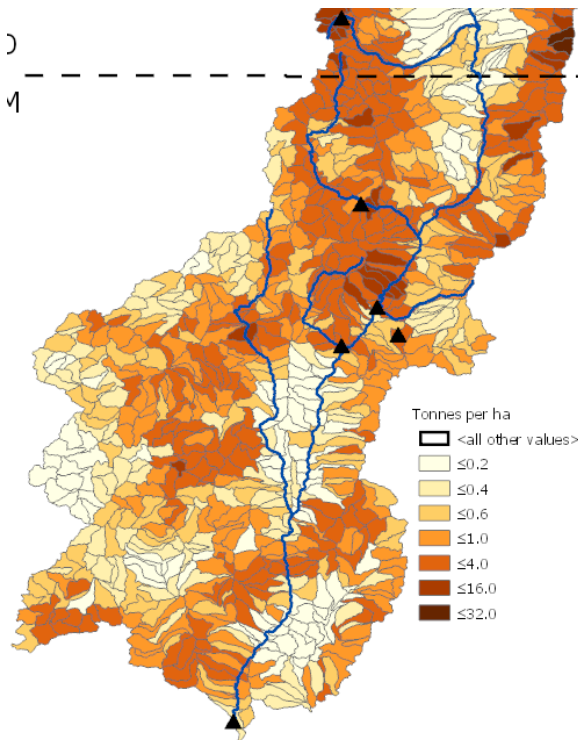


# CHANGE IN SOIL LOSS RATES – DUE TO LAND COVER

## Modeled Historic

## Lower Emissions

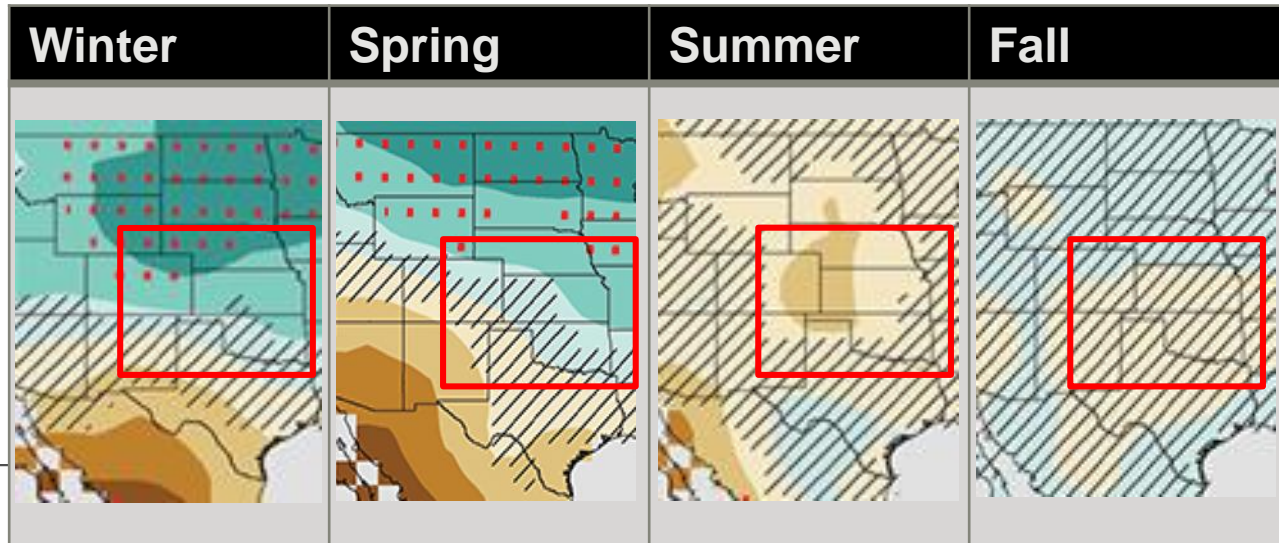
## Higher Emissions



- Orange = 0
- Land cover exerts more change on soil loss, contributing to increased losses in mountainous regions and reduced rates of loss at low elevations.



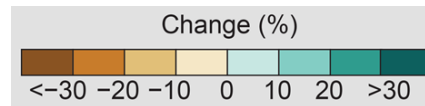
# CONSISTENT WITH OTHER STUDIES...



Climate Change Associated Sediment Yield Changes on the Rio Grande in New Mexico: Specific Sediment Evaluation for Cochiti Dam and Lake



August 2012  
(Revised)



Percent Change in Seasonal Precipitation  
 RCP 8.5, for 2085 compared to 1976-2005 Average  
*Fourth National Climate Assessment (2017)*



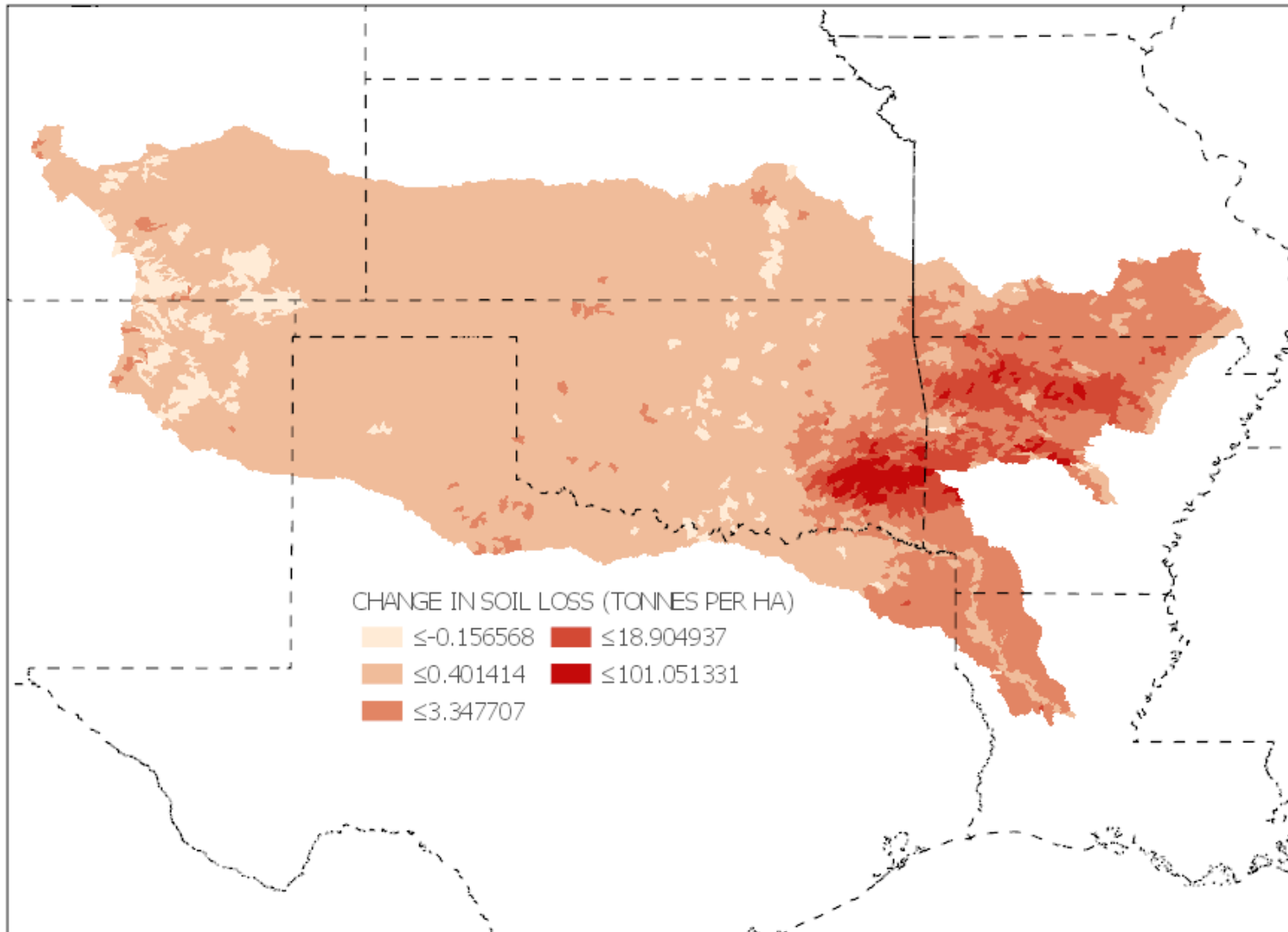
US Army Corps of Engineers<sup>®</sup>





# ARKANSAS-WHITE-RED RIVER BASIN

## CHANGE IN SOIL LOSS, HIGHER FUTURE SCENARIO



## CONCLUSION AND DISCUSSION

- Long-term average soil loss rates may change comparatively little with projected changes in precipitation (largely summer) and land use-land cover in the Middle Rio Grande Basin.
- However, projected reductions in runoff volumes on the Rio Grande seen in other studies suggest the system may be challenged to move this sediment in the future, at least in some years.
- The evolution of the summer monsoon and of eastern Pacific tropical storms remains uncertain, so it is not clear how these changes might affect sediment production and transport.

